



Breast Screening Programme, England 2008-09

The NHS Information Centre
is England's central, authoritative source
of health and social care information.

Acting as a 'hub' for high quality, national,
comparative data, we deliver information for local
decision makers, to improve the quality and
efficiency of care.

www.ic.nhs.uk

We welcome feedback on our publications, you can do this via the feedback
form available on our website - www.ic.nhs.uk/pubs/brstscreen0809

Author: The NHS Information Centre, Workforce and Facilities

Responsible Statistician: Jim Waldron

Date of Publication: 20 January 2010

Contents

Chapter		Page
1	Summary	5
2	Introduction	7
3	Analysis and Commentary	8
4	Definitions	19
5	Further Information	21
	Index to tables	22
	Tables	23
	Appendix A: Form KC62	54
	Appendix B: Form KC63	59

Summary

Breast Screening Programme, England 2008-09

Women between the ages of 50 and 70 are invited for regular breast screening (every three years) under a national programme. This is intended to detect breast cancer at an early stage.

At 31st March 2009:

Among women aged 53-64

- Over three-quarters (77.0%) had been screened at least once in the previous three years, a small increase from last year (76.7%). This is the fifth consecutive increase.
- In 125 (124 last year) of the 152 Primary Care Organisations, the coverage was 70.0% or higher.

Among women aged 53-70

- Over three quarters (76.5%) had been screened at least once in the previous three years (up from 75.9% last year).
- In 124 (121 last year) of the 152 Primary Care Organisations, the coverage was 70.0% or higher.
- Coverage among those women aged 65-70 (in the extended part of the programme) has now reached 75.4% an increase of 1.5 percentage points from 31st March 2008.

2008-09

- Around 2.3 million women (aged 45 and over) were invited for screening, an increase of 2.5% over last year and 52.9% more than ten years ago.
- Just under 1.8 million women (aged 45 and over) were screened within the programme, an increase of 3.5% over 2007-08. The last ten years have seen the programme grow by 43.9% from 1.2 million in 1998-99.
- There were 14,166 cases of cancer diagnosed in women screened aged 45 and over, similar to the previous year (14,110) and nearly double the number compared to 1998-99 (7,561).

- Of all cancers diagnosed, 11,212 (79.1%) were invasive and of these 5,850 (52.2%) were 15mm or less which could not have been detected by hand.

Among women aged 50-64

- Over 1.7 million were invited for screening in 2008-09. Of these 73.9% were screened (excluding early recalls).
- There were 7.1 cancers detected per 1000 women screened which has changed little over the past five years.

Among women aged 50-70

- Over 2.2 million were invited for screening in 2008-09. Of these 73.6% were screened (excluding early recalls).
- There were 7.8 cancers detected per 1000 women screened. This is a decrease from last year when it was 8.0 but an increase from 2002-03 when it was 7.2.

Previously only women aged 50-64 were eligible to be invited as part of the NHS Breast Screening Programme. However, this was extended in April 2001 to include women aged 65-70. The last screening unit began inviting older women in April 2006 and full national coverage will have been achieved this year. This bulletin, where appropriate will present data for women in both age groups 50-64 and 50-70. There is a further age extension being introduced (47 to 73), more details are available in the Definitions chapter, paragraph 3.8.

Introduction

Breast Screening – a general overview

1.1 Information on the NHS Breast Screening Programme is collected on the following NHS Information Centre returns:

- KC62 – information on the process and outcomes of the call and re-call system, collected from all Breast Screening Units (BSU).
- KC63 – information on the population coverage of the programme, collected from all Primary Care Organisations (PCO).

Data have been collected annually since 1988-89 on the KC62 and since 1994-95 on the KC63.

1.2 National policy for the NHS Breast Screening Programme is that eligible women aged 50-70 are invited for screening every 3 years. Because the programme is a rolling one which invites women from GP practices (or geographical areas) in a three year cycle, not every woman will receive an invitation as soon as she is 50. However, every woman should receive her first invitation before her 53rd birthday. Women who are over the upper age limit for routine invitations for breast screening are encouraged to make their own appointments at three yearly intervals.

1.3 Previously only women aged 50-64 were eligible to be invited as part of the NHS Breast Screening Programme. However, this was extended in April 2001 to include women aged 65-70. The last screening unit began inviting older women in April 2006 and full national coverage should be achieved this year. There is a further age extension being introduced (47 to 73), more details are available in the Definitions chapter, paragraph 3.8.

This bulletin, where appropriate, will present data for both the 50-64 and 50-70 age groups.

Analysis and Commentary

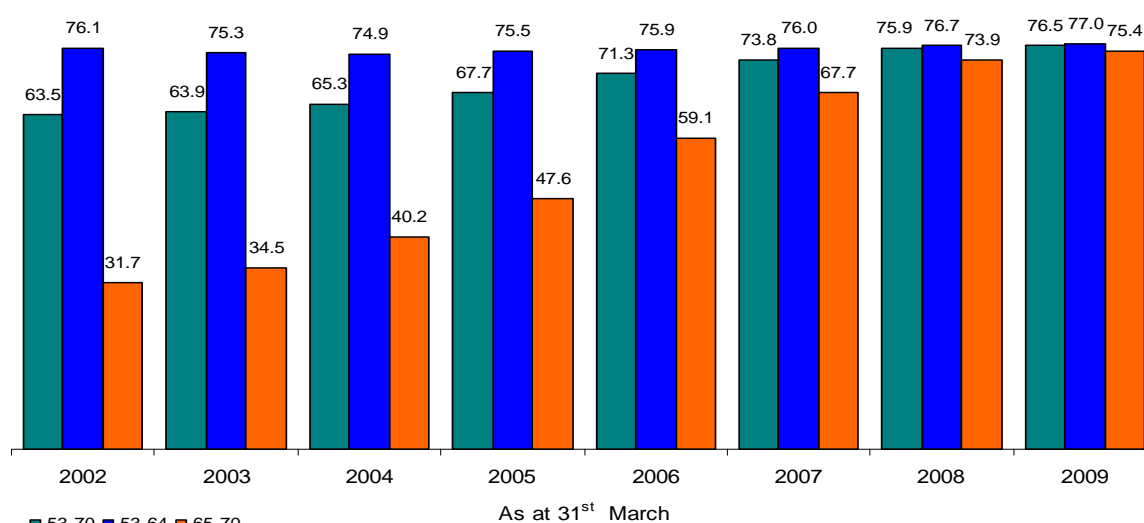
2.1 Overview (Table 1)

2.1.1 Over 1.7 million women aged 50-64 were invited for screening in 2008-09. In the past decade there has been a 24.6% increase in the number of women in this age range invited and a 19.9% increase in the number screened. Uptake (see definitions 3.2) for this age group was 73.9% in 2008-09.

2.1.2 In April 2001 the NHS Breast Screening Programme was extended to include routine invitations to women aged 65-70. In 2008-09 over 2.2 million women aged 50-70 were invited for screening. Uptake for this age group was 73.6% in 2008-09 compared with 73.2% in 2007-08 and 74.6% in 2002-03 at which time very few women aged 65-70 were invited.

2.1.3 In 2008-09, cancer was detected through the screening programme in 9,374 women aged 50-64. This is a rate of 7.1 cancers per 1,000 women screened. This has gradually increased since 1998-99 when the rate was 5.8. In women aged 50-70 cancer was detected through the screening programme in 13,039 women; a rate of 7.8 per 1,000 women screened.

Figure 1: Percentage coverage⁽¹⁾ for women aged 53-70, 53-64 and 65-70, England 2002-2009



■ 53-70 ■ 53-64 ■ 65-70

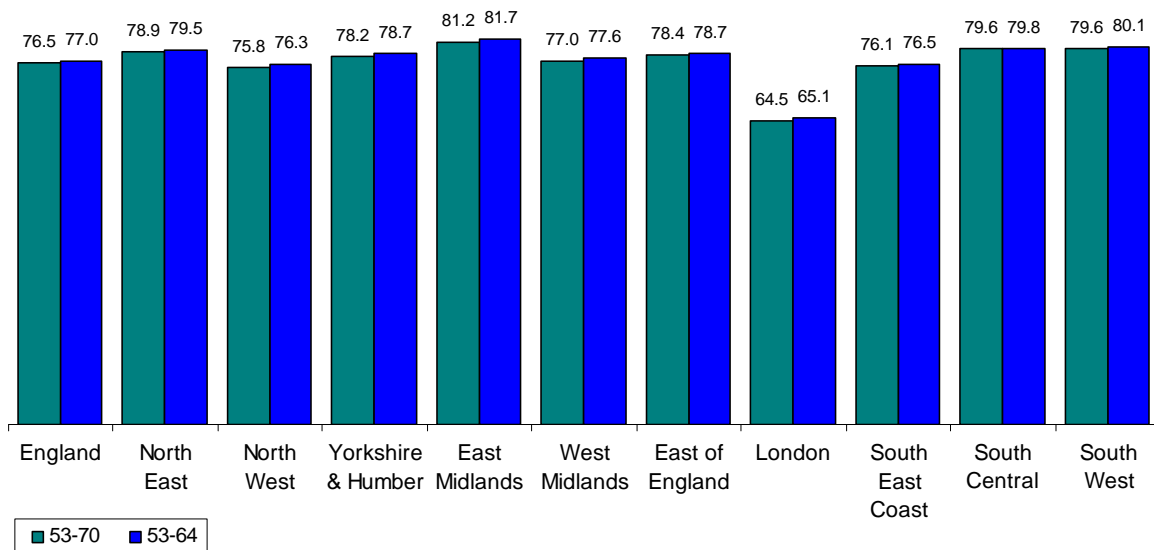
⁽¹⁾ Coverage (less than three years since last test)

Source: KC63 The NHS Information Centre

© Data prior to 2005, re-used with the permission of the Department of Health

2.2 Coverage (Tables 2 & 11)

Figure 2: Percentage coverage⁽¹⁾ of women aged 53-70 and 53-64 in England by SHA, 31st March 2009



⁽¹⁾ Coverage (less than 3 years since last test)
Source: KC63 The NHS Information Centre

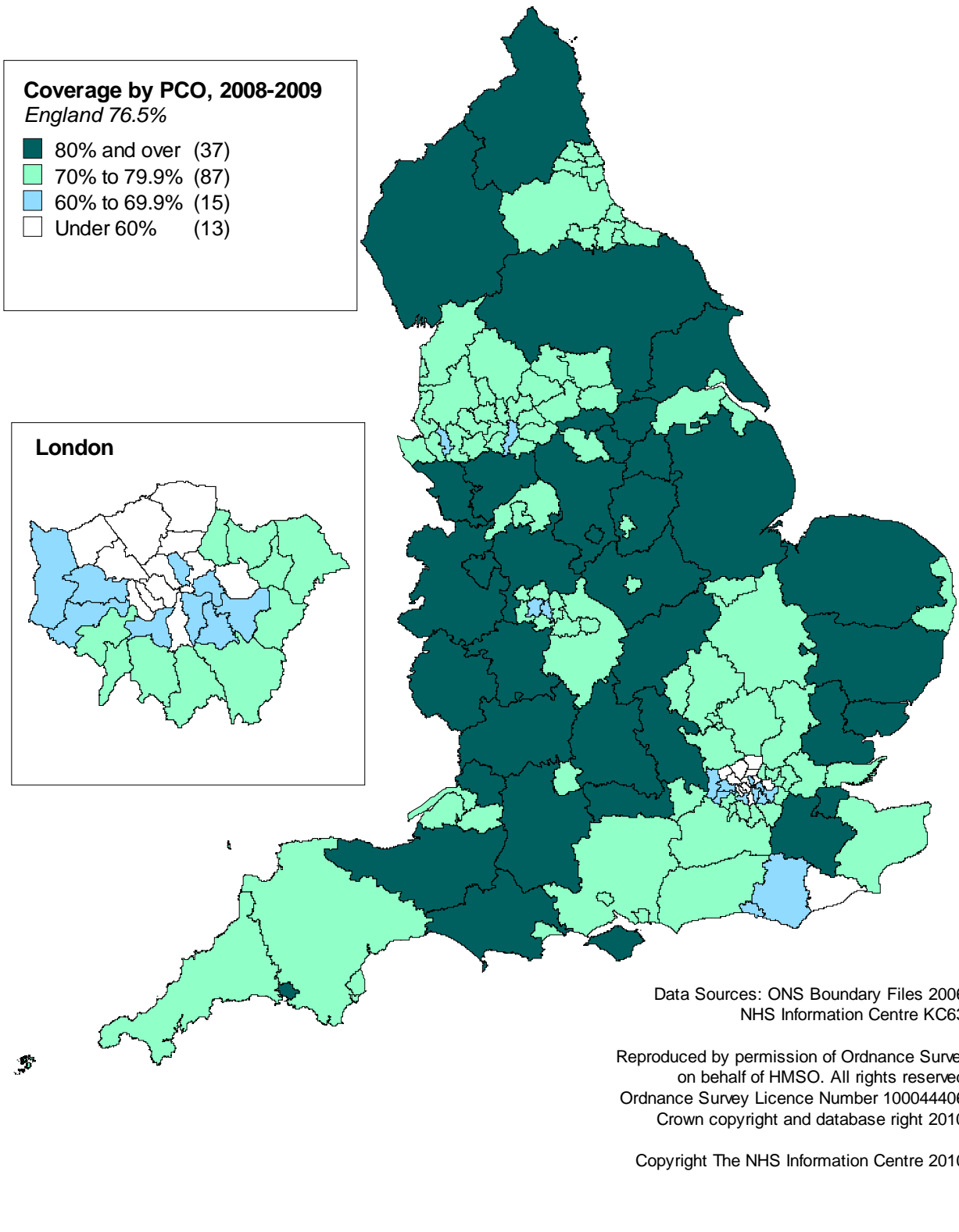
2.2.1 Coverage among women aged 53-64

- Nationally the reported coverage was 77.0% at 31st March 2009, compared to 76.7% in 2008. **(Figure 1)**
- All but one region (London) reported coverage above 75%. East Midlands reported the highest coverage with 81.7%. **(Figure 2)**
- At PCO level 125 out of 152 PCOs reported coverage above 70%, of which 43 reported coverage above 80%. 12 PCOs reported coverage below 60%.

2.2.2 Coverage among women aged 53-70

- Nationally the reported coverage was 76.5% at 31st March 2009, compared to 75.9% in 2008.
- All but one region (London) reported coverage above 75%. East Midlands reported the highest coverage with 81.2%.

Figure 3 - Breast Screening: Coverage of women aged 53-70 for England by Primary Care Organisation, 2008-09

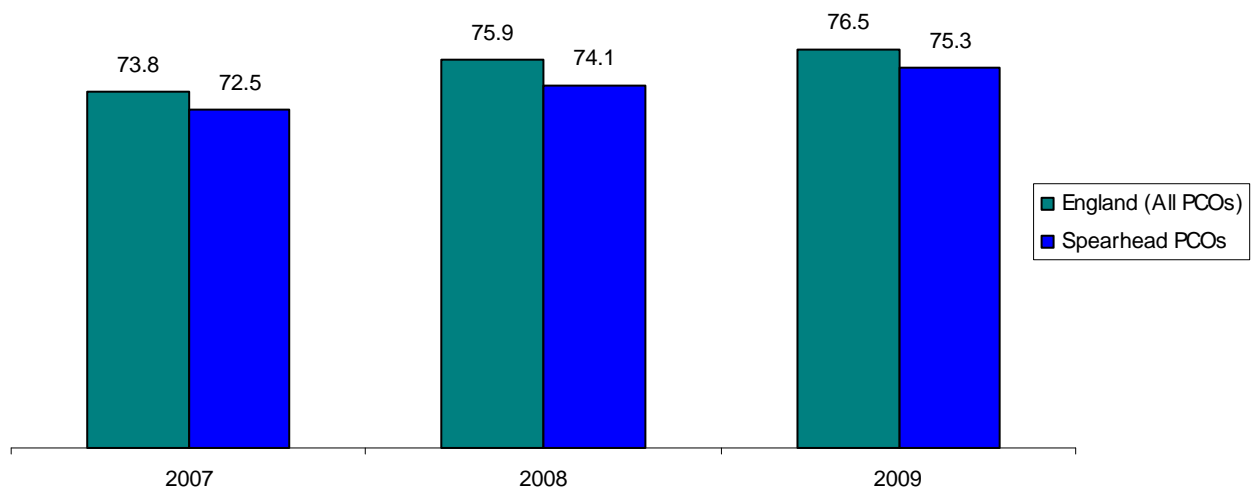


- At PCO level 124 out of 152 PCOs reported coverage above 70%, of which 37 reported coverage above 80%. 13 PCOs reported coverage below 60%. **(Figure 3)**

2.2.3 Coverage in Spearhead PCOs (Table 11)

- Mirroring the national trend overall, coverage among Spearhead PCOs **(see definitions 3.9)** has increased since last year. Among women aged 53-70 coverage was 75.3% at 31st March 2009 compared with 74.1% in 2008. This is slightly below the overall 53-70 coverage figure for England (76.5%). **(Figure 4)**
- Among women aged 53-64, 49 (46 in 2008) out of 62 Spearhead PCOs reported coverage above 70% of which 10 (8 in 2008) reported coverage above 80%. Four reported coverage below 60% (5 in 2008).
- Among women aged 53-70, 48 (45 in 2008) Spearhead PCOs reported coverage above 70% of which 9 (7 in 2008) reported coverage of above 80%. Five reported coverage below 60% (8 in 2008).

Figure 4: Percentage coverage⁽¹⁾ for women aged 53-70, England and English Spearhead PCOs, 2007 to 2009



(1) Coverage (less than 3 years since last test)

Year, as at 31 March

Source: KC63 The NHS Information Centre

2.3 Uptake of Invitations for Screening (Tables 3, 4, 5, 12 & 13)

2.3.1 Invitations among women aged 50-64

2.3.2 In 2008-09 over 1.7 million women aged 50-64 were invited for screening.

This can be shown by invitation type:

- First ever invitations accounted for 19.0%.
- Second or subsequent invitations to women who had not previously attended screening accounted for 10.8%.
- Routine recalls accounted for 62.9% (for women last screened within 5 years).
- Previously attended, but more than 5 years ago, accounted for 7.2%.
- Early recalls accounted for about 0.1% of invitations.

2.3.2 Uptake among women aged 50-64

Of the 82 screening units in England, 7 recorded uptake rates of 80% or over and a further 64 recorded rates between 70% and 80%. Uptake rates below 70% were recorded by 11 units, 7 of which were in the London region.

Uptake rates varied considerably according to the type of invitation:

- 69.8% of women receiving their first invitation were screened.
- 87.4% of women who had already been screened and received a routine invitation were screened.
- 19.7% of women who received a routine invitation, having failed to respond to a previous invitation, were screened.

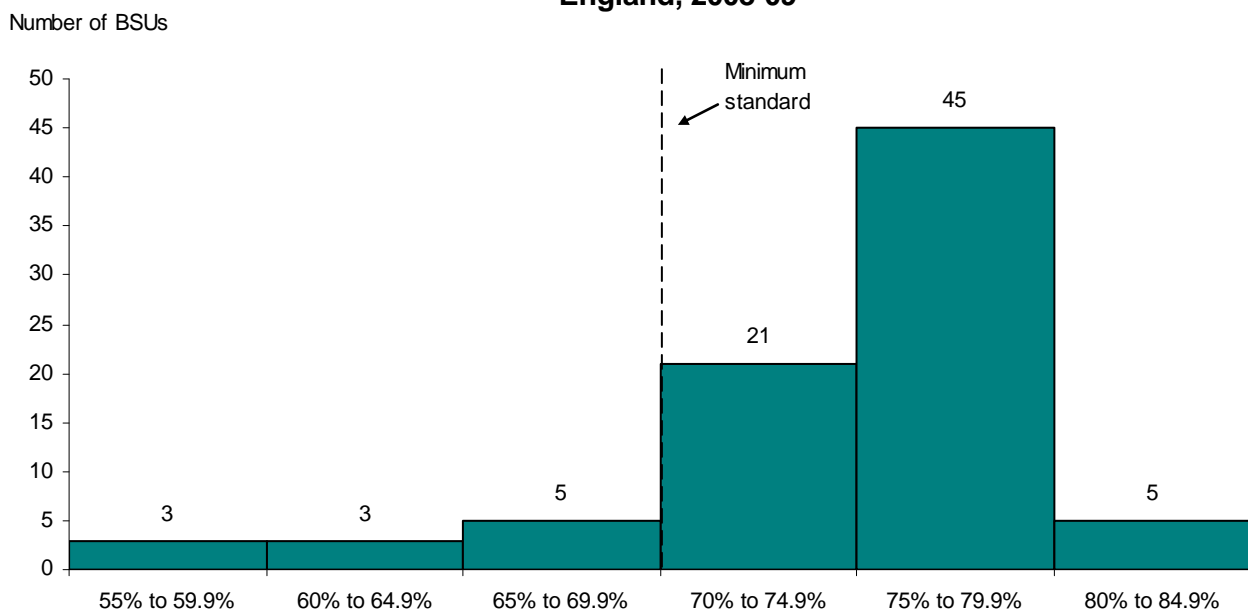
2.3.3 Invitations among women aged 50-70

In 2008-09 around 2.2 million women aged 50-70 were invited for screening.

This can be shown by invitation type:

- First ever invitations accounted for 15.1%
- Second or subsequent invitations to women who had not previously attended screening accounted for 10.3%
- Routine recalls accounted for 65.5% (for women last screened within 5 years).
- Previously attended, but more than 5 years ago, accounted for 9.0%.
- Early recalls accounted for about 0.1% of invitations.

Figure 5: Uptake for women aged 50-70 by Breast Screening Unit, England, 2008-09



Source: KC62 The NHS Information Centre

2.3.4 Uptake among women aged 50-70

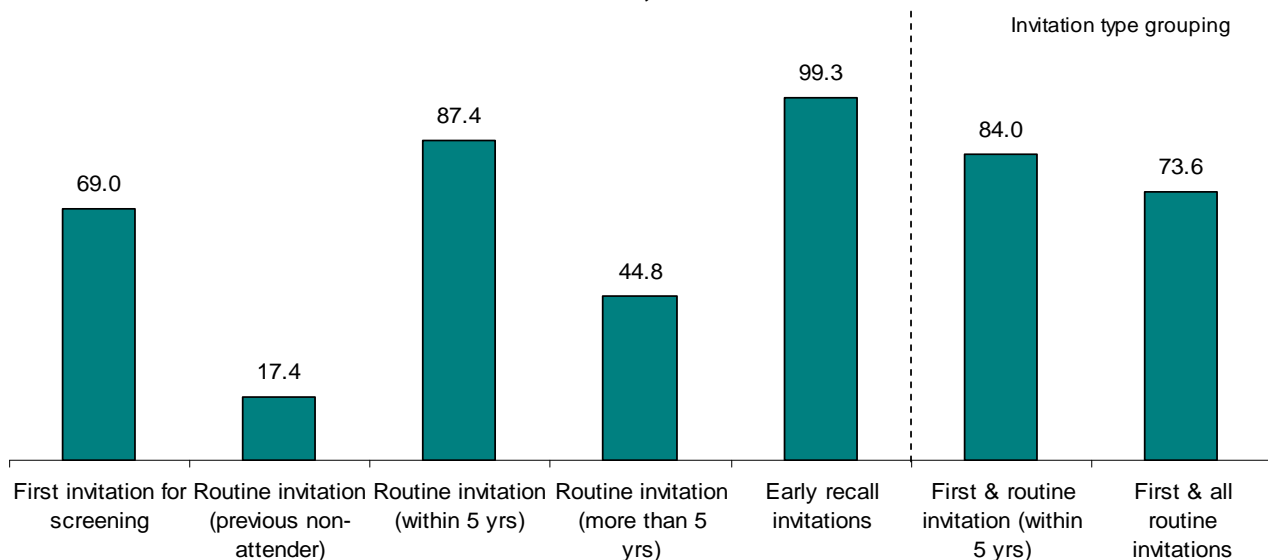
Of the 82 screening units, 5 recorded uptake rates of 80% or over and a further 66 recorded rates between 70% and 80%. Uptake rates below 70% were recorded by 11 units, 7 of which were in the London region. **(Figure 5)**

Uptake rates varied considerably according to the type of invitation:

- 69.0% of women receiving their first invitation were screened.

- 87.4% of women who had already been screened and received a routine invitation were screened.
- 17.4% of women who received a routine invitation, having failed to respond to a previous invitation, were screened. (Figure 6)

Figure 6: Percentage uptake of invitations for women aged 50-70 by type of invitation, 2008-09



Source: KC62 The NHS Information Centre

2.4 Outcome of Screening (Tables 5, 6 & 7)

2.4.1 Over 1.7 million women (aged 45 and over) were screened in 2008-09; around three quarters of these (74.2%) were aged 50 to 64 and the majority were aged 50 to 70 (94.4%). Of the total number screened, 2.3% were aged between 45 and 49, a further 20.2% were aged 65 to 70 and 3.3% were aged over 70 (including both those invited and self/GP referrals).

2.4.2 Self/GP referrals (aged 45 and over) accounted for 96,134 women screened, an increase of 12.1% over last year. 61.0% of these were women aged over 70, compared with 59.9% last year. There is a continuing decrease in self referrals amongst women aged 65-70 since the extension of the programme to include invitations to this age group. In 2004-05 these women accounted for

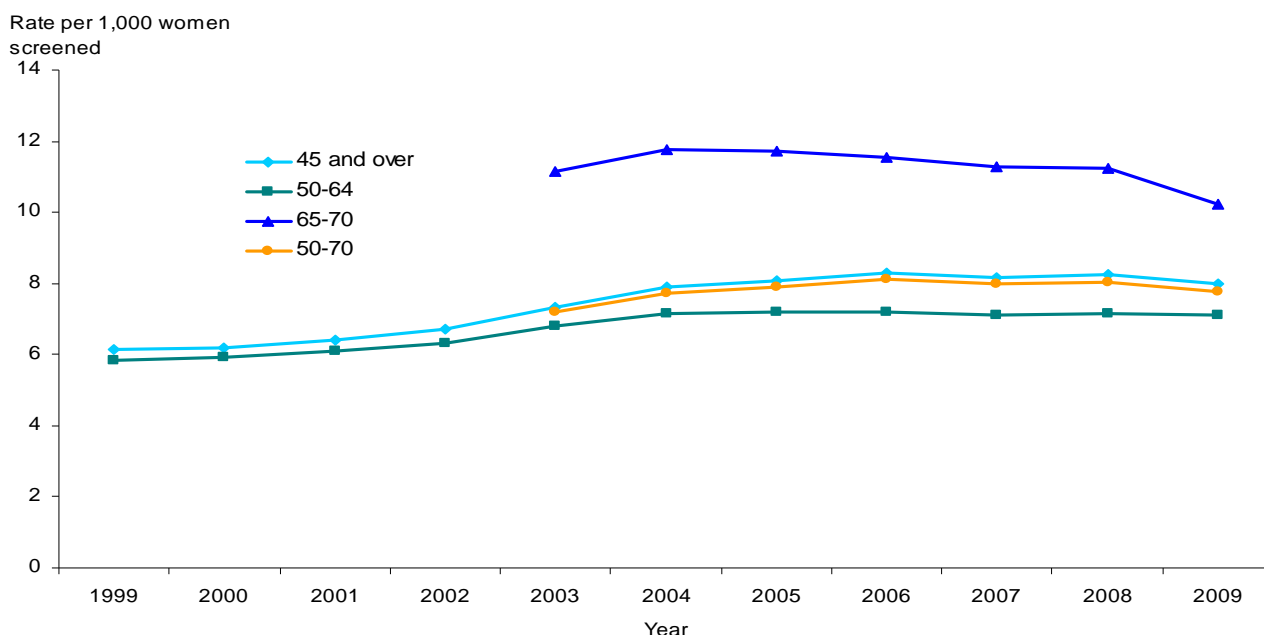
around 40.6% of self/GP referrals; last year this figure was 10.6% and it has continued to fall to 9.6% in 2008-09.

2.4.3 Similar to last year, women of all ages attending for the first time (i.e. in the prevalent round) were almost three times as likely to be referred for assessment as those who had been previously screened in the last 5 years (i.e. in the incident round).

2.4.4 Of all women referred for assessment (aged 45 and over), whether in the prevalent round or the incident round, 40.9% underwent cytology and/or core biopsy and 2.8% were referred for open biopsy.

2.4.5 Amongst women in the prevalent round 1.9% of those who were referred for assessment were recommended for early recall compared with 1.8% for the incident round.

Figure 7: Cancer detection rate by age in England, 1998-99 to 2008-09



Due to the programme expansion, data for 65-70 and 50-70 prior to 2002-03 are not applicable

2.4.6 A small proportion of the women referred for assessment as a result of an early recall invitation were again recommended for early recall (3.6%).

2.5 Cancers detected (Tables 8, 9 & 10)

2.5.1 A total of 14,166 cancers from women aged 45 and over were detected by the screening programme in 2008-09, a rate of 8.0 per 1,000 women screened. This overall rate was similar to that in 2007-08 (8.2). In the prevalent round the rate of cancers detected by the screening programme amongst women aged 45 and over was 7.7 cases per 1000 women screened (same as 2007-08). In the incident round the rate was 7.4 cases per 1000 women screened, the same as 2007-08.

2.5.2 The number of cancers detected by the programme in the extended age group (65-70) was 3,665 cancers in 2008-09, an increase from 1,344 in 2002-03. This reflects the increasing number of women being screened in this age group. However, it was slightly down on 2007-08 (3,891) and the detection rate was down from 11.2 in 2007-08 to 10.2 in 2008-09, per 1000 women screened (aged 65-70).

2.5.3 Of all the cancers detected in women aged 45 and over, 2,930 (20.7%) were non-invasive or micro-invasive and a further 5,850 (41.3%) were invasive, but small i.e. less than 15mm.

2.5.4 In women aged 50-70, the proportion of non-invasive and micro-invasive was highest in the prevalent round at 26.3%, compared with 19.8% in the incident round. Small cancers accounted for 48.2% of all invasive cancers found in the prevalent round but accounted for a greater proportion (53.9%) in the incident round.

2.5.5 It is known that the incidence of breast cancer rises with age and this pattern was observed with cancers detected by the screening programme. The cancer detection rate in 2008-09 was around 7 per 1,000 for women screened aged 50-64 and just under 8 per 1000 women aged 50-70. Detection rates were greatest amongst women aged over 70 at just under 15 per 1,000 women screened. **(Figure 7 & Table A)**

2.5.6 The cancer detection rate was lower in the incident round for women who regularly attend screening. As expected the cancer detection rate was higher in the early recalls. **(Table A)**

Type of invitation	All ages			rate per 1000 women screened					
	45 and over	50-64	50-70	45-49	50-54	55-59	60-64	65-70	Over 70
Total	8	7	8	7	6	6	9	10	15
1st invitation for routine screening	7	7	7	7	7	7	(10)	(14)	(0)
Routine invitation to previous non-attenders	11	10	11	(0)	8	10	20	16	(0)
Routine invitation to previous attenders (Last screen within 5 years)	7	7	7	(0)	5	6	8	10	(12)
Routine invitation to previous attenders (Last screened more than 5 years previously)	11	9	11	(29)	6	8	11	15	(0)
Early recalls	(29)	(23)	(28)	(0)	(11)	(25)	(47)	(52)	(51)
Self / GP referral (no previous screen)	13	11	12	(0)	9	16	(15)	(17)	24
Self / GP referral (within 5 years)	11	8	9	(0)	6	8	9	13	12
Self / GP referral (> 5 years)	20	11	11	(0)	(13)	(10)	(11)	(13)	23

Source: KC62 Part 1 and 3 Tables A to F2

Rates shown in brackets are based on fewer than 2000 women screened

2.6 Selected diagnostic and outcome statistics (Tables 14 & 15)

2.6.1 Data are presented giving information about the diagnostic process and outcomes of each local screening programme. The screening programmes vary enormously in size with the smallest screening over 6,000 women (all ages) per year and the largest around 47,000. Among the 50-64 age group numbers

screened range from nearly 5,000 women per year for the smallest unit and the largest almost 35,000. For the 50-70 age group this ranges from nearly 6,000 to 44,000.

2.6.2 The prevalent round accounts for only one fifth (20.4%) of women aged 50-64 screened (**Table 6**) and only 16.2% of women aged 50-70. Rates for smaller units, particularly for the prevalent round, are often based on very small numbers of cases. Such rates may be subject to considerable fluctuation from year to year and caution should be exercised in interpreting some of the data.

Definitions

3.1 Coverage is the proportion of women resident and eligible* at a particular point in time (31st March 2009 in this instance) who have had a test with a recorded result at least once in the previous 3 years. (*Excluding those ineligible i.e. those who have had a bilateral mastectomy). Currently coverage is best assessed using the 53-70 age group as women may be called at any time between their 50th and 53rd birthdays.

3.2 Uptake is the proportion of women invited for screening, over the year, for whom a screening test result is recorded.

3.3 Prevalent screening is that of women being screened for the first time within the Breast Screening Programme. In this statistical bulletin, prevalent round figures relate to first invitations for routine screening and routine invitations to previous non-attendees.

3.4 Incident screening is that of women previously screened within the Breast Screening Programme. In this statistical bulletin, incident round figures relate only to routine invitations to previous attendees last screened within 5 years

3.5 Early recall is a non-routine invitation at less than the standard screening interval.

3.6 Non- or micro-invasive cancer is a cancer which demonstrates no or only very slight invasion into adjacent tissues by malignant cells of a carcinoma in situ.

3.7 Invasive cancer is cancer which has spread beyond the layer of tissue in which it developed and is growing into surrounding, healthy tissues.

3.8 The [extension to the NHS Breast Screening Programme](#) for routine invitations to women aged 65-70 commenced in April 2001. The last unit began inviting women in April 2006, full coverage should have been achieved this year (2008-09). The data include some women aged 45-49. The vast majority of these are women aged 49 who have been called for their first routine screening a few months before their 50th birthday.

It was announced in December 2007 that the age at which women are screened has been extended again incorporating nine screening rounds for women between the ages of 47 to 73 years of age, with a guarantee that women will have their first screening before the age of 50. Again this extension will occur in phases across the service and full implementation is expected by the end of 2012 with full coverage expected in 2015. This extension is in accordance with the recommendations outlined in the recent Cancer Reform Strategy (published December 2007), details of which are available on the following websites;

http://www.dh.gov.uk/en/Publicationsandstatistics/Publications/PublicationsPolicyAndGuidance/dh_081006

http://www.dh.gov.uk/en/Healthcare/Cancer/DH_091120

3.9 [Spearhead PCOs](#) are areas with the worst health and deprivation in England based on indices of deprivation, including premature mortality from cancer and cardiovascular diseases, and life expectancy. For further information on Spearhead PCOs and how they are determined please visit the following Department of Health website;

http://www.dh.gov.uk/en/Publicationsandstatistics/Lettersandcirculars/Dearcolleagueletters/DH_4138963

3.10 For definitions of further medical terminology please visit the Cancer Screening Programmes website at www.cancerscreening.nhs.uk

3.11 In the tables:

- .. = Not available
- = Zero

Further information

The NHS Information Centre

1 Trevelyan Square

Boar Lane

Leeds

LS1 6AE

Telephone: 0845 300 6016

Email: enquiries@ic.nhs.uk

Media enquiries should be made to the media relations manager.

This bulletin can be found on The NHS Information Centre website at:

<http://www.ic.nhs.uk/statistics-and-data-collections/screening/breast-cancer>

Copies of previous publications can also be accessed via this link.

Further information about breast screening is available from the NHS Cancer Screening Programmes website:

<http://www.cancerscreening.nhs.uk/index.html>

INDEX TO TABLES

Table number	Description
1	Summary statistics on breast cancer and the NHS Breast Screening Programme, 1999 to 2009
2	Test status and coverage of women by age band, 31 March 2009
2a	Test status and coverage of women aged 53-64 and 53-70 by SHA, 31 March 2009
3	Uptake of invitations to screen for women aged 50-64 and 50-70 by SHA, 1998-99 to 2008-09
3a	Uptake of invitations to screen for women aged 50-64 and 50-70 by type of invitation and SHA, 2008-09
4	Number of women invited and uptake of invitations to screen, by age band and type of invitation, 2008-09
5	Number of women screened by age band and type of invitation, 2008-09
6	Women screened by age band, type of invitation and outcome, 2008-09
7	Women screened by age, SHA and outcome, 2008-09
7a	Women screened by age and outcome, 2008-09
8	Women screened and cancers detected by age and type of invitation, 2008-09
9	Women screened and cancers detected by age band and SHA, 2008-09
9a	Women screened and cancers detected by age band, 2008-09
10	Women aged 45 and over, with cancer diagnosed, by size of cancer and age band, 2008-09
10a	Women aged 50-64 and 50-70, with cancer diagnosed, by invitation type and size of cancer, 2008-09
11	Coverage of women aged 53-64 by Primary Care Organisation at 31 March 2008 and 2009
11a	Coverage of women aged 53-70 by Primary Care Organisation at 31 March 2008 and 2009
12	Uptake by women aged 50-64 of invitations to screen, by Breast Screening Unit, 1998-99 to 2008-09
12a	Uptake by women aged 50-70 of invitations to screen, by Breast Screening Unit, 2002-03 to 2008-09
13	Uptake by women aged 50-64 by type of invitation and Breast Screening Unit, 2008-09
13a	Uptake by women aged 50-70 by type of invitation and Breast Screening Unit, 2008-09
14	Selected diagnostic and outcome statistics for women aged 50-64, by Breast Screening Unit, 2008-09
14a	Selected diagnostic and outcome statistics for women aged 50-70, by Breast Screening Unit, 2008-09
15	Selected diagnostic and outcome statistics for women aged 50-64, by Breast Screening Unit, 2008-09
15a	Selected diagnostic and outcome statistics for women aged 50-70, by Breast Screening Unit, 2008-09

Table 1: Summary statistics on breast cancer and the NHS Breast Screening Programme, 1999 to 2009

England

	units	1999	2000	2001	2002	2003	2004	2005	2006	2007	2008	2009
Breast Screening programme data												
Coverage ⁽¹⁾												
Women aged 53-64	%	76.1	75.3	74.9	75.5	75.9	76.0	76.7	77.0
Women aged 65-70	%	31.7	34.5	40.2	47.6	59.1	67.7	73.9	75.4
Women aged 53-70	%	63.5	63.9	65.3	67.7	71.3	73.8	75.9	76.5
Women aged 50-64	%	67.7	69.3	70.2	69.8	69.3	69.0	69.5	69.9	69.9	70.3	70.6
Uptake ⁽²⁾												
Women aged 50-64	%	76.2	75.5	75.3	75.6	74.9	75.5	75.0	75.4	74.1	73.6	73.9
Women aged 65-70	%	69.1	71.9	71.0	72.5	71.7	71.6	72.4
Women aged 50-70	%	74.6	75.2	74.4	74.8	73.6	73.2	73.6
Invitations and outcomes ⁽³⁾												
Women invited (50-64)	millions	1.40	1.52	1.48	1.45	1.51	1.52	1.55	1.59	1.64	1.70	1.74
Women invited (65-70)	millions	0.09	0.17	0.25	0.42	0.43	0.47	0.48
Women invited (50-70)	millions	1.60	1.69	1.80	2.02	2.07	2.17	2.22
Women invited (45 and over)	millions	1.49	1.62	1.58	1.54	1.65	1.73	1.84	2.06	2.12	2.22	2.28
Women screened (50-64)	millions	1.10	1.18	1.15	1.12	1.16	1.18	1.19	1.23	1.24	1.28	1.32
Women screened (65-70)	millions	0.12	0.18	0.22	0.33	0.32	0.35	0.36
Women screened (50-70)	millions	1.28	1.35	1.41	1.55	1.56	1.63	1.67
Women screened (45 and over)	millions	1.23	1.32	1.30	1.27	1.35	1.42	1.48	1.63	1.64	1.71	1.77
Women referred for assessment (50-64)	thousands	58.5	61.8	60.2	59.4	59.7	60.1	56.7	56.6	56.3	58.9	58.5
Women referred for assessment (65-70)	thousands	5.5	8.1	10.0	13.9	13.7	14.2	13.3
Women referred for assessment (50-70)	thousands	65.2	68.2	66.7	70.5	70.1	73.1	71.8
Women referred for assessment (45 and over)	thousands	66.2	69.9	68.4	67.9	69.6	73.0	71.4	75.4	75.5	78.9	78.1
Women with cancer detected (50-64)	thousands	6.4	7.0	7.0	7.1	7.9	8.4	8.6	8.8	8.8	9.2	9.4
Women with cancer detected (65-70)	thousands	1.3	2.1	2.6	3.8	3.7	3.9	3.7
Women with cancer detected (50-70)	thousands	9.2	10.5	11.1	12.6	12.5	13.1	13.0
Women with cancer detected (45 and over)	thousands	7.6	8.2	8.3	8.5	9.8	11.2	12.0	13.5	13.4	14.1	14.2
Cancers detected per 1,000 women screened (50-64)	rate	5.8	5.9	6.1	6.3	6.8	7.1	7.2	7.2	7.1	7.2	7.1
Cancers detected per 1,000 women screened (65-70)	rate	11.1	11.8	11.7	11.6	11.3	11.2	10.2
Cancers detected per 1,000 women screened (50-70)	rate	7.2	7.7	7.9	8.1	8.0	8.0	7.8
Cancers detected per 1,000 women screened (45 and over)	rate	6.1	6.2	6.4	6.7	7.3	7.9	8.1	8.3	8.2	8.2	8.0
Breast Cancer registration data ⁽⁴⁾⁽⁶⁾ England												
Registrations (Women aged 50-64)	thousands	12.9	12.7	13.1	13.2	13.9	14.0	13.6	13.5	13.5
Registrations (Women all ages)	thousands	35.5	34.8	35.6	35.4	37.6	37.9	38.7	38.5	38.0
Registrations per 100,000 popn (50-64)	rate	306	296	301	300	313	312	300	293	287
Registrations per 100,000 popn (all ages)	rate	120	117	118	117	123	124	125	123	120
Breast Cancer mortality data ⁽⁵⁾⁽⁶⁾ England												
Deaths (Women aged 50-64)	thousands	2.8	2.8	2.7	2.7	2.6	2.6	2.6	2.6	2.5	2.4	..
Deaths (Women aged 50-70)	thousands	4.0	4.0	3.9	3.8	3.7	3.7	3.8	3.7	3.6
Deaths (Women all ages)	thousands	11.1	10.9	10.9	10.8	10.5	10.3	10.3	10.2	10.0	10.1	..
Deaths per 100,000 popn (50-64)	rate	66	65	62	60	59	57	58	57	54	50	..
Deaths per 100,000 popn (50-70)	rate	72	72	69	67	64	64	64	62	60
Deaths per 100,000 popn (all ages)	rate	32	31	31	30	29	28	28	28	27	26	..

⁽¹⁾ Source: Form KC63; data are as at 31 March

⁽²⁾ Source: Form KC62, (Part 1, Tables A, B, C1 & C2); Data are for 12 months ending 31 March

⁽³⁾ Source: Form KC62, (Parts 1, 2 & 3, Tables A - F2); Data are for 12 months ending 31 March

⁽⁴⁾ Source: National Cancer Intelligence Centre, ONS; data are for year commencing 1 January

Rates for all ages are Directly Age Standardised Rates using the European Standard Population (DAS(E))

⁽⁵⁾ National Centre for Health Outcomes Development using source mortality extracts from ONS; data are registrations for years commencing 1 January

Data for 2000 are based on ICD-9 coding of the cause of death and have been adjusted for comparability to years 1999 and 2001 to 2008 which are based on ICD-10.

Rates for all ages are Directly Age Standardised Rates using the European Standard Population (DAS(E))

⁽⁶⁾ Some data for breast cancer registrations and mortality have been revised from previous publications and are subject to change

Table 2: NHS Breast Screening Programme: test status and coverage of women by age band, 31 March 2009

Age at test	thousands/percentages					
	Number of women registered	Number ineligible	Women never screened ⁽¹⁾		Number of women less than 3 years since last test	Coverage (less than 3 years since last test) (%)
			number	%		
50-74	7,023.4	7.7	1,205.6	17.2	4,685.4	66.8
50-64	4,747.5	4.6	991.5	20.9	3,349.8	70.6
65-70	1,434.6	2.2	123.4	8.6	1,079.3	75.4
53-64	3,738.3	4.2	460.3	12.3	2,874.7	77.0
53-70	5,172.9	6.4	583.7	11.3	3,954.1	76.5
45-49	1,881.2	0.1	1,866.5	99.2	13.9	0.7
50-52	1,009.2	0.4	531.2	52.6	475.1	47.1
53-54	621.6	0.5	119.7	19.3	469.7	75.6
55-59	1,529.5	1.6	193.0	12.6	1,170.8	76.6
60-64	1,587.1	2.1	147.6	9.3	1,234.2	77.9
65-69	1,207.1	1.9	103.0	8.5	916.8	76.1
70	227.6	0.3	20.4	9.0	162.5	71.5
71-74	841.3	0.9	90.7	10.8	256.2	30.5
75 and over	2,411.2	0.4	1,292.2	53.6	85.7	3.6

Source: KC63

⁽¹⁾ This includes the number of women selected and never selected for screening.
Copyright © 2010, The Health and Social Care Information Centre. All rights reserved

Table 2a: NHS Breast Screening Programme: test status and coverage of women aged 53-64 and 53-70 by SHA, 31 March 2009

Strategic Health Authority	thousands/percentages					
	Number of women registered	Number ineligible	Women never screened ⁽¹⁾		Number of women less than 3 years since last test	Coverage (less than 3 years since last test) (%)
			number	%		
Women aged 53-64						
England	3,738.3	4.2	460.3	12.3	2,874.7	77.0
North East	197.2	0.3	21.6	11.0	156.4	79.5
North West	514.3	0.5	65.6	12.8	392.1	76.3
Yorkshire & the Humber	379.1	0.6	43.9	11.6	298.1	78.7
East Midlands	330.7	0.4	30.7	9.3	270.0	81.7
West Midlands	396.4	0.4	47.5	12.0	307.4	77.6
East of England	432.6	0.4	48.8	11.3	340.3	78.7
London	448.3	0.3	90.2	20.1	291.5	65.1
South East Coast	331.5	0.4	38.0	11.5	253.1	76.5
South Central	292.7	0.3	30.3	10.4	233.5	79.8
South West	415.5	0.5	43.6	10.5	332.4	80.1
Women aged 53-70						
England	5,172.9	6.4	583.7	11.3	3,954.1	76.5
North East	271.7	0.4	27.4	10.1	214.1	78.9
North West	715.8	0.8	83.3	11.6	542.0	75.8
Yorkshire & the Humber	523.9	0.9	56.0	10.7	408.8	78.2
East Midlands	457.8	0.7	38.8	8.5	371.0	81.2
West Midlands	555.8	0.5	61.1	11.0	427.7	77.0
East of England	597.9	0.7	61.8	10.3	468.5	78.4
London	608.1	0.5	113.7	18.7	391.7	64.5
South East Coast	460.2	0.7	48.1	10.4	349.6	76.1
South Central	401.4	0.5	37.9	9.4	319.2	79.6
South West	580.4	0.8	55.6	9.6	461.5	79.6

Source: KC63

⁽¹⁾ This includes the number of women selected and never selected for screening.
Copyright © 2010, The Health and Social Care Information Centre. All rights reserved

Table 3: NHS Breast Screening Programme: uptake of invitations to screen⁽¹⁾ for women aged 50-64 and 50-70 by SHA, 1998-99 to 2008-09

	percentages										
Strategic Health Authority	1998-99	1999-2000	2000-01	2001-02	2002-03	2003-04	2004-05	2005-06	2006-07	2007-08	2008-09
Women aged 50-64											
England	76.2	75.5	75.3	75.6	74.9	75.5	75.0	75.4	74.1	73.6	73.9
North East	79.7	80.6	79.3	79.3	78.5	78.3	78.0	78.3	78.3	76.6	76.8
North West	76.6	75.4	75.1	76.1	75.3	75.1	74.8	74.9	73.8	72.8	73.6
Yorkshire & the Humber	76.9	77.1	78.6	76.2	76.5	78.4	76.5	77.3	77.9	75.0	75.5
East Midlands	81.4	81.2	80.8	81.7	80.5	80.6	80.4	79.6	78.2	79.1	78.8
West Midlands	77.3	76.8	76.5	77.2	76.9	76.5	76.1	76.3	75.7	74.8	74.5
East of England	77.3	76.8	75.7	77.1	77.0	76.7	77.0	77.9	76.5	77.0	76.6
London	62.9	62.0	62.2	63.3	61.3	62.7	61.8	62.3	60.6	61.2	61.1
South East Coast	77.8	75.9	75.6	76.4	76.3	77.5	77.3	77.3	74.6	74.5	74.8
South Central	79.4	78.3	78.9	77.3	77.3	78.1	75.9	77.3	77.3	75.2	76.1
South West	79.2	78.2	78.1	78.0	77.3	78.0	78.2	78.8	75.8	76.1	76.8
Women aged 50-70											
England	74.6	75.2	74.4	74.8	73.6	73.2	73.6
North East	78.4	77.1	76.3	77.1	77.5	75.9	76.2
North West	74.8	74.5	74.0	74.0	73.0	72.3	73.2
Yorkshire & the Humber	76.0	77.9	75.9	76.6	77.3	74.5	75.0
East Midlands	80.2	80.2	79.9	79.0	77.6	78.6	78.4
West Midlands	76.4	75.8	75.1	75.6	75.0	74.3	74.0
East of England	76.8	76.3	76.3	77.2	75.9	76.8	76.5
London	61.0	62.5	61.3	61.8	60.3	60.6	60.6
South East Coast	76.2	77.3	76.9	77.1	74.4	74.3	74.7
South Central	77.2	78.0	75.6	77.0	77.1	74.9	76.0
South West	77.1	77.7	78.0	78.3	75.5	75.6	76.5

Source: KC62 (Part 1, Tables A, B, C1 and C2)

Notes:
⁽¹⁾ First invitations and routine invitations

© Data prior to 2005, re-used with the permission of the Department of Health.
 Copyright © 2010, The Health and Social Care Information Centre. All rights reserved

Table 3a: NHS Breast Screening Programme: uptake of invitations to screen for women aged 50-64 and 50-70 by type of invitation and SHA, 2008-09

	percentages						
Strategic Health Authority	Invitation type					Invitation type grouping	
	First invitation for screening	Routine invitation (previous non-attender)	Routine invitation (within 5 yrs)	Routine invitation (more than 5 yrs)	Early recall invitations	First & routine invitation (within 5 yrs)	First & all routine invitations ⁽¹⁾
Women aged 50-64							
England	69.8	19.7	87.4	48.2	99.5	83.3	73.9
North East	74.2	20.6	88.9	49.8	100.0	85.5	76.8
North West	71.0	18.3	87.7	46.0	100.0	83.8	73.6
Yorkshire & the Humber	72.3	18.9	88.4	43.6	99.3	84.8	75.5
East Midlands	75.7	21.5	89.3	50.7	100.0	86.5	78.8
West Midlands	71.3	18.6	87.6	47.7	100.0	84.1	74.5
East of England	72.3	20.7	89.1	53.4	100.0	85.1	76.6
London	57.1	18.3	80.0	41.8	100.0	72.7	61.1
South East Coast	69.4	21.3	87.5	51.8	100.0	83.5	74.8
South Central	71.3	21.7	87.7	46.4	99.2	84.2	76.1
South West	73.5	21.6	88.4	53.4	98.1	85.3	76.8
Women aged 50-70							
England	69.0	17.4	87.4	44.8	99.3	84.0	73.6
North East	73.9	17.9	88.7	43.8	100.0	86.0	76.2
North West	70.6	16.1	87.6	41.3	100.0	84.5	73.2
Yorkshire & the Humber	71.8	16.5	88.4	40.5	99.3	85.4	75.0
East Midlands	75.2	19.0	89.2	47.3	100.0	86.9	78.4
West Midlands	70.7	16.2	87.5	46.2	100.0	84.6	74.0
East of England	71.7	18.2	89.2	48.8	100.0	86.0	76.5
London	56.0	16.4	80.0	38.9	100.0	73.4	60.6
South East Coast	68.4	19.0	87.6	52.0	100.0	84.1	74.7
South Central	70.7	19.2	87.9	43.2	98.8	84.9	76.0
South West	72.9	19.0	88.5	48.2	97.6	85.9	76.5

Source: KC62 (Part 1, Tables A to D)

⁽¹⁾ This is the grouping used in Table 3 above

Copyright © 2010, The Health and Social Care Information Centre. All rights reserved

Table 4: NHS Breast Screening Programme: number of women invited and uptake of invitations to screen, by age band and type of invitation, 2008-09

England											numbers/percentages
Type of Invitation	Aged 45 & over	Aged 45-74	Aged 50-64	Aged 50-70	Age band						
					45-49	50-52	53-54	55-59	60-64	65-70	Over 70
Invitations (numbers)											
Total number of women invited	2,280,047	2,279,990	1,741,989	2,224,003	55,329	364,756	236,645	566,547	574,041	482,014	715
1st invitation for routine screening	391,198	391,191	330,855	336,006	55,178	303,079	9,639	10,931	7,206	5,151	14
Routine invitation to previous non-attenders	228,834	228,830	188,093	228,726	57	14,119	47,058	73,594	53,322	40,633	51
Routine invitation to previous attenders (Last screen within 5 years)	1,457,154	1,457,151	1,096,271	1,456,705	42	45,035	174,556	431,444	445,236	360,434	407
Routine invitation to previous attenders (Last screen more than 5 years previously)	201,114	201,110	125,444	200,926	46	2,028	5,182	50,256	67,978	75,482	142
Early recalls	1,747	1,708	1,326	1,640	6	495	210	322	299	314	101
Uptake (percentage screened of women invited)											
Total	73.6	73.6	73.9	73.6	71.9	73.1	72.1	74.0	75.2	72.5	69.0
1st invitation for routine screening	69.5	69.5	69.8	69.0	72.0	73.2	42.6	28.5	24.9	22.9	21.4
Routine invitation to previous non-attenders	17.4	17.4	19.7	17.4	47.4	34.0	30.0	17.6	9.8	6.6	9.8
Routine invitation to previous attenders (Last screen within 5 years)	87.4	87.4	87.4	87.4	59.5	84.8	85.3	87.3	88.5	87.5	82.6
Routine invitation to previous attenders (Last screen more than 5 years previously)	44.8	44.8	48.2	44.8	76.1	68.3	61.2	51.6	44.1	39.1	35.9
Early recalls	99.2	99.2	99.5	99.3	100.0	99.6	100.0	99.4	99.0	98.7	97.0

Source: KC62 (Part 1, Tables A to D)
Copyright © 2010, The Health and Social Care Information Centre. All rights reserved

Table 5: NHS Breast Screening Programme: number of women screened by age band and type of invitation, 2008-09

England											thousands
Type of invitation	Aged 45 & over screened	Aged 45-74 screened	Aged 50-64 screened	Aged 50-70 screened	Age band						
					45-49	50-52	53-54	55-59	60-64	65-70	Over 70
Total	1,773.4	1,750.2	1,315.9	1,674.4	39.9	273.0	175.0	428.3	439.6	358.5	59.1
1st invitation for routine screening	271.7	271.7	230.8	232.0	39.7	221.8	4.1	3.1	1.8	1.2	0.0
Routine invitation to previous non-attenders	39.8	39.8	37.1	39.8	0.0	4.8	14.1	13.0	5.2	2.7	0.0
Routine invitation to previous attenders (Last screen within 5 years)	1,273.9	1,273.9	958.0	1,273.5	0.0	38.2	148.9	376.7	394.2	315.5	0.3
Routine invitation to previous attenders (Last screen more than 5 years previously)	90.1	90.1	60.5	90.1	0.0	1.4	3.2	26.0	30.0	29.5	0.1
Early recalls	1.7	1.7	1.3	1.6	0.0	0.5	0.2	0.3	0.3	0.3	0.1
Self / GP referral (no previous screen)	15.3	14.0	12.0	12.9	0.1	6.1	2.3	2.2	1.4	0.9	2.2
Self / GP referral (within 5 yrs)	67.2	50.8	13.7	20.5	0.0	0.2	2.1	6.0	5.3	6.8	46.8
Self / GP referral (> 5 yrs)	13.7	8.2	2.5	4.0	0.0	0.0	0.1	1.0	1.4	1.6	9.6

Source: KC62 (Part 1, Tables A to F2)
Copyright © 2010, The Health and Social Care Information Centre. All rights reserved

Table 6: NHS Breast Screening Programme: women screened by age band, type of invitation and outcome, 2008-09

England		numbers/percentages					
Type of invitation	Number of women screened	Referred ⁽¹⁾ for assessment		Referred ⁽²⁾ for cytology and/or core biopsy (number)	Referred for open biopsy (number)	Early Recall ⁽³⁾	
		(number)	%			(number)	%
Women aged 45 and over							
Total	1,773,396	78,052	4.4	31,955	2,203	1,482	0.1
1st invitation for routine screening	271,690	23,331	8.6	9,295	774	443	0.2
Routine invitation to previous non-attenders	39,827	3,256	8.2	1,408	85	71	0.2
Routine invitation to previous attenders (Last screen within 5 years)	1,273,874	40,218	3.2	16,759	1,075	724	0.1
Routine invitation to previous attenders (Last screen more than 5 years previously)	90,138	4,721	5.2	2,062	116	98	0.1
Early recalls	1,733	1,523	87.9	184	26	55	3.2
Self / GP referral (no previous screen)	15,261	1,388	9.1	577	32	33	0.2
Self / GP referral (within 5 yrs)	67,210	2,671	4.0	1,211	75	40	0.1
Self / GP referral (> 5 yrs)	13,663	944	6.9	459	20	18	0.1
Women aged 50-64							
Total	1,315,859	58,489	4.4	23,122	1,649	1,124	0.1
1st invitation for routine screening	230,800	19,827	8.6	7,951	651	396	0.2
Routine invitation to previous non-attenders	37,117	3,010	8.1	1,289	76	69	0.2
Routine invitation to previous attenders (Last screen within 5 years)	957,979	29,705	3.1	11,825	779	527	0.1
Routine invitation to previous attenders (Last screen more than 5 years previously)	60,504	2,954	4.9	1,210	80	56	0.1
Early recalls	1,319	1,174	89.0	133	22	40	3.0
Self / GP referral (no previous screen)	12,006	1,131	9.4	450	20	25	0.2
Self / GP referral (within 5 yrs)	13,666	550	4.0	214	17	10	0.1
Self / GP referral (> 5 yrs)	2,468	138	5.6	50	4	1	0.0
Women aged 50-70							
Total	1,674,362	71,801	4.3	29,292	2,021	1,385	0.1
1st invitation for routine screening	231,978	19,917	8.6	7,984	656	399	0.2
Routine invitation to previous non-attenders	39,795	3,255	8.2	1,408	85	71	0.2
Routine invitation to previous attenders (Last screen within 5 years)	1,273,513	40,206	3.2	16,752	1,074	724	0.1
Routine invitation to previous attenders (Last screen more than 5 years previously)	90,052	4,712	5.2	2,059	116	97	0.1
Early recalls	1,629	1,444	88.6	170	25	51	3.1
Self / GP referral (no previous screen)	12,915	1,190	9.2	476	24	28	0.2
Self / GP referral (within 5 yrs)	20,450	853	4.2	356	33	13	0.1
Self / GP referral (> 5 yrs)	4,030	224	5.6	87	8	2	0.0

Source: KC62 (Parts 1 and 2, Tables A to F2)

⁽¹⁾ Including women referred for cytology, core biopsy or open biopsy

⁽²⁾ Including women referred for open biopsy

⁽³⁾ Including all women whose final outcome was early recall, whether after initial screen, assessment, cytology or biopsy (core or open)

Table 7: NHS Breast Screening Programme: women screened by age, SHA and outcome, 2008-09

England		numbers/percentages						
Age band	Strategic Health Authority	Number of women screened	Referred ⁽¹⁾ for assessment		Referred ⁽²⁾ for cytology and/or core biopsy	Referred for open biopsy	Early Recall ⁽³⁾	
			(number)	%			(number)	(number)
45 & over	England	1,773,396	78,052	4.4	31,955	2,203	1,482	0.1
	North East	95,605	3,277	3.4	1,570	85	45	0.0
	North West	240,093	10,976	4.6	4,177	296	220	0.1
	Yorkshire & the Humber	195,551	7,438	3.8	3,649	188	144	0.1
	East Midlands	166,736	6,534	3.9	2,843	152	79	0.0
	West Midlands	181,555	7,814	4.3	3,180	202	128	0.1
	East of England	203,357	8,910	4.4	3,964	291	169	0.1
	London	187,892	9,245	4.9	3,885	279	93	0.0
	South East Coast	155,907	7,094	4.6	2,686	255	145	0.1
	South Central	151,397	7,464	4.9	2,509	181	175	0.1
	South West	195,303	9,300	4.8	3,492	274	284	0.1
50-64	England	1,315,859	58,489	4.4	23,122	1,649	1,124	0.1
	North East	72,393	2,522	3.5	1,169	63	37	0.1
	North West	177,585	8,202	4.6	3,008	214	153	0.1
	Yorkshire & Humber	146,017	5,558	3.8	2,686	154	106	0.1
	East Midlands	122,957	4,736	3.9	2,001	111	62	0.1
	West Midlands	133,736	5,770	4.3	2,263	151	104	0.1
	East of England	149,892	6,808	4.5	2,922	224	131	0.1
	London	143,673	7,169	5.0	2,899	206	68	0.0
	South East Coast	114,853	5,233	4.6	1,877	186	112	0.1
	South Central	111,537	5,527	5.0	1,776	135	129	0.1
	South West	143,216	6,964	4.9	2,521	205	222	0.2
50-70	England	1,674,362	71,801	4.3	29,292	2,021	1,385	0.1
	North East	91,170	3,062	3.4	1,463	73	42	0.0
	North West	226,188	10,030	4.4	3,807	267	205	0.1
	Yorkshire & Humber	185,972	6,916	3.7	3,390	181	139	0.1
	East Midlands	157,546	5,979	3.8	2,590	142	76	0.0
	West Midlands	171,396	7,140	4.2	2,915	193	122	0.1
	East of England	192,793	8,372	4.3	3,678	270	154	0.1
	London	177,559	8,510	4.8	3,531	252	83	0.0
	South East Coast	146,306	6,473	4.4	2,439	226	137	0.1
	South Central	141,936	6,767	4.8	2,258	161	159	0.1
	South West	183,496	8,552	4.7	3,221	256	268	0.1

Source: KC62 (Parts 1 and 2, Table T)

⁽¹⁾ Including women subsequently referred for cytology, core biopsy or open biopsy⁽²⁾ Including women subsequently referred for open biopsy⁽³⁾ Including all women whose final outcome was early recall, whether after initial screen, assessment, cytology or biopsy (core or open)

Copyright © 2010, The Health and Social Care Information Centre. All rights reserved

Table 7a: NHS Breast Screening Programme: women screened by age and outcome, 2008-09

England		numbers/percentages						
Age	Number of women screened	Referred ⁽¹⁾ for assessment		Referred ⁽²⁾ for cytology and/or core biopsy	Referred for open biopsy	Early Recall ⁽³⁾		
		(number)	%			(number)	(number)	%
45 & over	1,773,396	78,052	4.4	31,955	2,203	1,482	0.1	
45-74	1,750,190	76,824	4.4	31,355	2,179	1,451	0.1	
50-64	1,315,859	58,489	4.4	23,122	1,649	1,124	0.1	
50-70	1,674,362	71,801	4.3	29,292	2,021	1,385	0.1	
45-49	39,943	3,430	8.6	1,319	120	45	0.1	
50-52	272,966	21,980	8.1	8,531	701	447	0.2	
53-54	174,982	7,039	4.0	2,441	169	148	0.1	
55-59	428,321	14,332	3.3	5,610	364	264	0.1	
60-64	439,590	15,138	3.4	6,540	415	265	0.1	
65-70	358,503	13,312	3.7	6,170	372	261	0.1	
Over 70	59,091	2,821	4.8	1,344	62	52	0.1	

Source: KC62 (Parts 1 and 2, Table T)

⁽¹⁾ Including women subsequently referred for cytology, core biopsy or open biopsy⁽²⁾ Including women subsequently referred for open biopsy⁽³⁾ Including all women whose final outcome was early recall, whether after initial screen, assessment, cytology or biopsy (core or open)

Copyright © 2010, The Health and Social Care Information Centre. All rights reserved

Table 8: NHS Breast Screening Programme: women screened and cancers detected by age and type of invitation, 2008-09

England								numbers/rates
Type of invitation	Number of women screened	Cancers detected						
		Number			Rate per 1,000 women screened			
		Total number of women with cancer	Non - invasive or micro - invasive	Small (<15mm)	Total number of women with cancer	Non - invasive or micro - invasive	Small (<15mm)	
Women aged 45 & over								
Total	1,773,396	14,166	2,930	5,850	8.0	1.7	3.3	
1st invitation for routine screening	271,690	1,972	555	685	7.3	2.0	2.5	
Routine invitation to previous non-attenders	39,827	426	86	157	10.7	2.2	3.9	
Routine invitation to previous attenders (Last screen within 5 years)	1,273,874	9,465	1,876	4,086	7.4	1.5	3.2	
Routine invitation to previous attenders (Last screen more than 5 years previously)	90,138	1,015	190	418	11.3	2.1	4.6	
Early recalls	1,733	51	15	29	29.4	8.7	16.7	
Self / GP referral (no previous screen)	15,261	201	31	63	13.2	2.0	4.1	
Self / GP referral (within 5 yrs)	67,210	768	143	315	11.4	2.1	4.7	
Self / GP referral (>5 yrs)	13,663	268	34	97	19.6	2.5	7.1	
Women aged 50-64								
Total	1,315,859	9,374	2,045	3,742	7.1	1.6	2.8	
1st invitation for routine screening	230,800	1,687	468	592	7.3	2.0	2.6	
Routine invitation to previous non-attenders	37,117	384	79	144	10.3	2.1	3.9	
Routine invitation to previous attenders (Last screen within 5 years)	957,979	6,431	1,325	2,683	6.7	1.4	2.8	
Routine invitation to previous attenders (Last screen more than 5 years previously)	60,504	573	118	216	9.5	2.0	3.6	
Early recalls	1,319	30	11	15	22.7	8.3	11.4	
Self / GP referral (no previous screen)	12,006	134	20	40	11.2	1.7	3.3	
Self / GP referral (within 5 yrs)	13,666	109	19	40	8.0	1.4	2.9	
Self / GP referral (>5 yrs)	2,468	26	5	12	10.5	2.0	4.9	
Women aged 50-70								
Total	1,674,362	13,039	2,706	5,421	7.8	1.6	3.2	
1st invitation for routine screening	231,978	1,703	473	597	7.3	2.0	2.6	
Routine invitation to previous non-attenders	39,795	426	86	157	10.7	2.2	3.9	
Routine invitation to previous attenders (Last screen within 5 years)	1,273,513	9,461	1,875	4,084	7.4	1.5	3.2	
Routine invitation to previous attenders (Last screen more than 5 years previously)	90,052	1,014	189	418	11.3	2.1	4.6	
Early recalls	1,629	46	15	26	28.2	9.2	16.0	
Self / GP referral (no previous screen)	12,915	149	22	45	11.5	1.7	3.5	
Self / GP referral (within 5 yrs)	20,450	194	39	73	9.5	1.9	3.6	
Self / GP referral (>5 yrs)	4,030	46	7	21	11.4	1.7	5.2	

Source: KC62 (Parts 1 and 3, Tables A to F2)

Copyright © 2010, The Health and Social Care Information Centre. All rights reserved

Table 9: NHS Breast Screening Programme: women screened and cancers detected by age band and SHA, 2008-09

		numbers/rates						
		Cancers detected						
Age band	Strategic Health Authority	Number of women screened	Number			Rate per 1,000 women screened		
			Total number of women with cancer	Non - invasive or micro - invasive	Small (<15mm)	Total number of women with cancer	Non - invasive or micro - invasive	Small (<15mm)
45 & over	England	1,773,396	14,166	2,930	5,850	8.0	1.7	3.3
	North East	95,605	731	141	279	7.6	1.5	2.9
	North West	240,093	1,826	357	710	7.6	1.5	3.0
	Yorkshire & the Humber	195,551	1,555	315	701	8.0	1.6	3.6
	East Midlands	166,736	1,372	274	626	8.2	1.6	3.8
	West Midlands	181,555	1,477	267	631	8.1	1.5	3.5
	East of England	203,357	1,708	380	704	8.4	1.9	3.5
	London	187,892	1,491	319	556	7.9	1.7	3.0
	South East Coast	155,907	1,368	307	570	8.8	2.0	3.7
	South Central	151,397	1,170	245	462	7.7	1.6	3.1
	South West	195,303	1,468	325	611	7.5	1.7	3.1
50-64	England	1,315,859	9,374	2,045	3,742	7.1	1.6	2.8
	North East	72,393	490	95	184	6.8	1.3	2.5
	North West	177,585	1,213	239	441	6.8	1.3	2.5
	Yorkshire & the Humber	146,017	1,071	246	469	7.3	1.7	3.2
	East Midlands	122,957	908	194	411	7.4	1.6	3.3
	West Midlands	133,736	967	184	383	7.2	1.4	2.9
	East of England	149,892	1,121	261	442	7.5	1.7	2.9
	London	143,673	987	215	373	6.9	1.5	2.6
	South East Coast	114,853	886	199	368	7.7	1.7	3.2
	South Central	111,537	764	182	283	6.8	1.6	2.5
	South West	143,216	967	230	388	6.8	1.6	2.7
50-70	England	1,674,362	13,039	2,706	5,421	7.8	1.6	3.2
	North East	91,170	691	130	266	7.6	1.4	2.9
	North West	226,188	1,700	330	665	7.5	1.5	2.9
	Yorkshire & the Humber	185,972	1,446	296	658	7.8	1.6	3.5
	East Midlands	157,546	1,251	256	572	7.9	1.6	3.6
	West Midlands	171,396	1,369	249	588	8.0	1.5	3.4
	East of England	192,793	1,561	351	648	8.1	1.8	3.4
	London	177,559	1,363	293	513	7.7	1.7	2.9
	South East Coast	146,306	1,251	275	530	8.6	1.9	3.6
	South Central	141,936	1,054	227	417	7.4	1.6	2.9
	South West	183,496	1,353	299	564	7.4	1.6	3.1

Source: KC62 (Parts 1 and 3, Table T)
Copyright © 2010, The Health and Social Care Information Centre. All rights reserved

Table 9a: NHS Breast Screening Programme: women screened and cancers detected by age band, 2008-09

		numbers/rates						
		Cancers detected						
Age band	England	Number of women screened	Number			Rate per 1,000 women screened		
			Total number of women with cancer	Non - invasive or micro - invasive	Small (<15mm)	Total number of women with cancer	Non - invasive or micro - invasive	Small (<15mm)
45 & over		1,773,396	14,166	2,930	5,850	8.0	1.7	3.3
45-74		1,750,190	13,774	2,868	5,698	7.9	1.6	3.3
50-64		1,315,859	9,374	2,045	3,742	7.1	1.6	2.8
50-70		1,674,362	13,039	2,706	5,421	7.8	1.6	3.2
45-49		39,943	270	83	88	6.8	2.1	2.2
50-52		272,966	1,904	518	670	7.0	1.9	2.5
53-54		174,982	911	208	367	5.2	1.2	2.1
55-59		428,321	2,763	591	1,096	6.5	1.4	2.6
60-64		439,590	3,796	728	1,609	8.6	1.7	3.7
65-70		358,503	3,665	661	1,679	10.2	1.8	4.7
Over 70		59,091	857	141	341	14.5	2.4	5.8

Source: KC62 (Parts 1 and 3, Table T)
Copyright © 2010, The Health and Social Care Information Centre. All rights reserved

Table 10: NHS Breast Screening Programme: women aged 45 and over, with cancer diagnosed, by size of cancer and age band, 2008-09

England										
numbers/percentages										
Size of cancer	Age									
	45 & over	45-74	50-64	50-70	45-49	50-54	55-59	60-64	65-70	Over 70
All cancers	14,166	13,774	9,374	13,039	270	2,815	2,763	3,796	3,665	857
Invasive status not known	24	23	14	23	-	2	5	7	9	1
Non-invasive or possibly micro-invasive	2,791	2,734	1,958	2,582	78	698	565	695	624	131
Definitely micro-invasive	139	134	87	124	5	28	26	33	37	10
Invasive total	11,212	10,883	7,315	10,310	187	2,087	2,167	3,061	2,995	715
Small (less than 15mm) total	5,850	5,698	3,742	5,421	88	1,037	1,096	1,609	1,679	341
<i>per 1,000 women screened</i>	3.3	3.3	2.8	3.2	2.2	2.3	2.6	3.7	4.7	5.8
<i>as a percentage of total invasive</i>	52	52	51	53	47	50	51	53	56	48
Less than 10mm	2,911	2,843	1,905	2,704	50	536	548	821	799	157
Greater than or equal to 10mm and less than 15mm	2,939	2,855	1,837	2,717	38	501	548	788	880	184
Greater than or equal to 15mm and less than 20mm	2,054	2,001	1,353	1,887	33	385	424	544	534	134
Greater than or equal to 20mm and less than 50mm	2,715	2,631	1,847	2,485	54	563	522	762	638	176
Greater than or equal to 50mm	255	247	182	231	5	55	66	61	49	19
Size not known	338	306	191	286	7	47	59	85	95	45

Source: KC62 (Parts 1 and 3, Table T)

Copyright © 2010, The Health and Social Care Information Centre. All rights reserved

Table 10a: NHS Breast Screening Programme: women aged 50-64 and 50-70, with cancer diagnosed, by invitation type and size of cancer, 2008-09

England		numbers/percentages				
Size of cancer	All invitation types	Invitation type				Early recalls
		1st invitation for routine screening	Routine invitation to previous non-attenders	Routine invitation to previous attenders Last screen within 5 years	Routine invitation to previous attenders Last screen more than 5 years previously	
Women aged 50-64						
All cancers	9,374	1,687	384	6,431	573	30
Invasive status not known	14	2	3	8	1	-
Non-invasive or possibly micro-invasive	1,958	451	75	1,263	114	11
Definitely micro-invasive	87	17	4	62	4	-
Invasive total	7,315	1,217	302	5,098	454	19
Small (less than 15mm) total	3,742	592	144	2,683	216	15
<i>per 1,000 women screened</i>	2.8	2.6	3.9	2.8	3.6	11.4
<i>as a percentage of total invasive</i>	51	49	48	53	48	79
Less than 10mm	1,905	316	67	1,361	113	8
Greater than or equal to 10mm and less than 15mm	1,837	276	77	1,322	103	7
Greater than or equal to 15mm and less than 20mm	1,353	223	52	952	83	2
Greater than or equal to 20mm and less than 50mm	1,847	341	86	1,213	126	1
Greater than or equal to 50mm	182	36	8	119	14	-
Size not known	191	25	12	131	15	1
Women aged 50-70						
All cancers	13,039	1,703	426	9,461	1,014	46
Invasive status not known	23	2	3	16	2	-
Non-invasive or possibly micro-invasive	2,582	456	82	1,783	180	15
Definitely micro-invasive	124	17	4	92	9	-
Invasive total	10,310	1,228	337	7,570	823	31
Small (less than 15mm) total	5,421	597	157	4,084	418	26
<i>per 1,000 women screened</i>	3.2	2.6	3.9	3.2	4.6	16.0
<i>as a percentage of total invasive</i>	53	49	47	54	51	84
Less than 10mm	2,704	318	73	2,038	199	15
Greater than or equal to 10mm and less than 15mm	2,717	279	84	2,046	219	11
Greater than or equal to 15mm and less than 20mm	1,887	223	59	1,403	143	2
Greater than or equal to 20mm and less than 50mm	2,485	345	98	1,727	206	1
Greater than or equal to 50mm	231	36	8	162	20	-
Size not known	286	27	15	194	36	2

Source: KC62 (Parts 1 and 3, Tables A to D & T)

Copyright © 2009, The Health and Social Care Information Centre. All rights reserved

Table 11: NHS Breast Screening Programme: coverage of women aged 53-64 by Primary Care Organisation, at 31 March 2008 and 2009

	numbers/percentages					
	As at 31 March 2008			As at 31 March 2009		
	Eligible Population ⁽¹⁾	Number of women screened	Coverage (less than 3 years since last test) (%)	Eligible Population ⁽¹⁾	Number of women screened	Coverage (less than 3 years since last test) (%)
England	3,713,812	2,847,824	76.7	3,734,110	2,874,703	77.0
Q30 North East SHA	194,553	154,731	79.5	196,889	156,445	79.5
5ND County Durham PCT	40,481	32,794	81.0	40,778	32,878	80.6
5J9 Darlington PCT	7,648	5,953	77.8	7,686	5,992	78.0
5KF Gateshead PCT	14,750	11,659	79.0	14,820	11,693	78.9
5D9 Hartlepool PCT	6,607	5,129	77.6	6,737	5,266	78.2
5KM Middlesbrough PCT	9,671	7,056	73.0	9,908	7,242	73.1
5D7 Newcastle PCT	15,692	12,120	77.2	16,050	12,415	77.4
5D8 North Tyneside PCT	15,997	12,672	79.2	16,232	12,883	79.4
TAC Northumberland Care Trust	27,836	23,071	82.9	28,067	23,403	83.4
5QR Redcar & Cleveland PCT	10,607	8,314	78.4	10,595	8,226	77.6
5KG South Tyneside PCT	11,120	8,756	78.7	11,316	8,923	78.9
5E1 Stockton-on-Tees Teaching PCT	13,525	10,644	78.7	13,779	10,817	78.5
5KL Sunderland Teaching PCT	20,619	16,563	80.3	20,921	16,707	79.9
Q31 North West SHA	511,902	386,052	75.4	513,738	392,134	76.3
5HG Ashton, Leigh & Wigan PCT	23,677	17,633	74.5	23,551	18,155	77.1
5CC Blackburn with Darwen PCT	10,021	6,965	69.5	10,128	7,245	71.5
5HP Blackpool PCT	10,763	6,587	61.2	10,777	7,865	73.0
5HQ Bolton PCT	19,785	15,515	78.4	19,754	15,140	76.6
5JX Bury PCT	13,881	11,002	79.3	13,859	10,954	79.0
5NP Central & Eastern Cheshire PCT	36,347	30,207	83.1	36,268	29,952	82.6
5NG Central Lancashire PCT	33,522	24,469	73.0	33,633	25,164	74.8
5NE Cumbria PCT	42,694	33,693	78.9	42,783	35,296	82.5
5NH East Lancashire PCT	28,265	21,015	74.3	28,281	21,186	74.9
5NM Halton & St Helens PCT	23,930	18,382	76.8	24,114	17,933	74.4
5NQ Heywood, Middleton & Rochdale PCT	14,690	10,512	71.6	14,889	11,057	74.3
5J4 Knowsley PCT	10,133	7,092	70.0	10,302	7,209	70.0
5NL Liverpool PCT	30,015	21,825	72.7	30,597	22,209	72.6
5NT Manchester PCT	24,266	15,550	64.1	24,638	15,899	64.5
5NF North Lancashire PCT	25,861	19,871	76.8	25,854	20,229	78.2
5J5 Oldham PCT	15,851	11,713	73.9	15,817	11,918	75.3
5F5 Salford PCT	14,419	10,398	72.1	14,426	10,320	71.5
5NJ Sefton PCT	21,280	16,014	75.3	21,425	16,196	75.6
5F7 Stockport PCT	21,544	16,468	76.4	21,590	16,449	76.2
5LH Tameside & Glossop PCT	16,617	12,583	75.7	16,607	12,777	76.9
5NR Trafford PCT	15,532	11,527	74.2	15,629	11,918	76.3
5J2 Warrington PCT	14,444	11,363	78.7	14,359	11,280	78.6
5NN Western Cheshire PCT	19,247	15,675	81.4	19,275	15,789	81.9
5NK Wirral PCT	25,118	19,993	79.6	25,182	19,994	79.4
Q32 Yorkshire & the Humber SHA	375,801	289,208	77.0	378,543	298,060	78.7
5JE Barnsley PCT	17,797	14,866	83.5	17,906	14,872	83.1
5NY Bradford & Airedale Teaching PCT	31,428	23,220	73.9	31,932	23,508	73.6
5J6 Calderdale PCT	15,034	10,769	71.6	15,258	11,661	76.4
5N5 Doncaster PCT	22,210	16,989	76.5	22,363	18,059	80.8
5NW East Riding of Yorkshire PCT	27,180	20,027	73.7	27,259	22,223	81.5
5NX Hull Teaching PCT	18,070	13,300	73.6	18,371	13,378	72.8
5N2 Kirklees PCT	27,870	21,773	78.1	28,074	22,302	79.4
5N1 Leeds PCT	48,199	35,888	74.5	48,554	35,887	73.9
TAN North East Lincolnshire PCT	12,229	6,983	57.1	12,266	9,390	76.6
5EF North Lincolnshire PCT	13,141	9,442	71.9	13,184	10,538	79.9
5NV North Yorkshire & York PCT	63,191	52,646	83.3	63,613	52,707	82.9
5H8 Rotherham PCT	18,659	15,505	83.1	18,750	15,542	82.9
5N4 Sheffield PCT	35,125	27,734	79.0	35,158	27,744	78.9
5N3 Wakefield District PCT	25,668	20,066	78.2	25,855	20,249	78.3
Q33 East Midlands SHA	329,303	266,532	80.9	330,255	269,952	81.7
5ET Bassetlaw PCT	8,917	7,397	83.0	8,896	7,324	82.3
5N7 Derby City PCT	18,584	15,153	81.5	18,692	15,427	82.5
5N6 Derbyshire County PCT	56,097	46,433	82.8	55,936	46,261	82.7
5PC Leicester City PCT	18,180	13,804	75.9	18,649	14,119	75.7
5PA Leicestershire County & Rutland PCT	51,623	43,675	84.6	51,748	43,872	84.8
5N9 Lincolnshire PCT	60,577	45,724	75.5	60,393	49,536	82.0
5PD Northamptonshire PCT	49,101	40,175	81.8	49,396	40,163	81.3
5EM Nottingham City PCT	15,756	12,064	76.6	15,759	11,468	72.8
5N8 Nottinghamshire County PCT	50,468	42,107	83.4	50,786	41,782	82.3
Q34 West Midlands SHA	396,035	310,030	78.3	395,987	307,385	77.6
5PG Birmingham East & North PCT	25,399	18,734	73.8	25,551	18,586	72.7
5MD Coventry Teaching PCT	20,270	14,894	73.5	20,259	14,594	72.0
5PE Dudley PCT	23,112	17,983	77.8	22,913	17,683	77.2
5MX Heart of Birmingham Teaching PCT	11,651	7,786	66.8	11,848	7,952	67.1
5CN Herefordshire PCT	14,885	12,125	81.5	14,868	11,928	80.2
5PH North Staffordshire PCT	16,887	13,560	80.3	16,956	13,434	79.2
5PF Sandwell PCT	20,156	14,773	73.3	20,147	14,277	70.9
5M2 Shropshire County PCT	24,618	20,582	83.6	24,568	20,613	83.9
TAM Solihull Care Trust	16,560	13,008	78.6	16,405	12,896	78.6
5M1 South Birmingham PCT	22,872	16,808	73.5	22,933	17,226	75.1
5PK South Staffordshire PCT	47,960	39,183	81.7	47,905	38,894	81.2
5PJ Stoke on Trent PCT	18,636	14,481	77.7	18,669	14,390	77.1
5MK Telford & Wrekin PCT	12,097	9,642	79.7	12,155	9,871	81.2
5M3 Walsall Teaching PCT	17,488	13,436	76.8	17,494	13,033	74.5
5PM Warwickshire PCT	41,475	33,162	80.0	41,417	32,873	79.4
5MV Wolverhampton City PCT	16,058	11,872	73.9	15,969	11,714	73.4
5PL Worcestershire PCT	45,911	38,001	82.8	45,930	37,421	81.5

continued

Table 11: NHS Breast Screening Programme: coverage of women aged 53-64 by Primary Care Organisation, at 31 March 2008 and 2009

	numbers/percentages					
	As at 31 March 2008			As at 31 March 2009		
	Eligible Population ⁽¹⁾	Number of women screened	Coverage (less than 3 years since last test) (%)	Eligible Population ⁽¹⁾	Number of women screened	Coverage (less than 3 years since last test) (%)
England	3,713,812	2,847,824	76.7	3,734,110	2,874,703	77.0
Q35 East of England SHA	430,147	337,133	78.4	432,198	340,345	78.7
5P2 Bedfordshire PCT	30,228	24,301	80.4	30,537	24,533	80.3
5PP Cambridgeshire PCT	42,743	34,283	80.2	43,071	34,527	80.2
5P3 East & North Hertfordshire PCT	38,456	29,611	77.0	38,751	30,423	78.5
5PR Great Yarmouth & Waveney Teaching PCT	19,131	15,372	80.4	18,937	14,943	78.9
5GC Luton Teaching PCT	10,429	7,916	75.9	10,560	8,037	76.1
5PX Mid Essex PCT	28,628	23,753	83.0	28,833	23,878	82.8
5PQ Norfolk PCT	61,423	49,680	80.9	61,404	49,924	81.3
5PW North East Essex PCT	25,078	20,568	82.0	25,016	20,455	81.8
5PN Peterborough PCT	10,262	8,063	78.6	10,478	8,091	77.2
5P1 South East Essex PCT	27,488	20,301	73.9	27,371	20,277	74.1
5PY South West Essex PCT	29,106	21,156	72.7	29,200	21,786	74.6
5PT Suffolk PCT	48,572	39,785	81.9	48,746	39,772	81.6
5PV West Essex PCT	20,185	13,388	66.3	20,434	16,058	78.6
5P4 West Hertfordshire PCT	38,418	28,956	75.4	38,860	27,641	71.1
Q36 London SHA⁽²⁾	441,140	284,194	64.4	448,018	291,452	65.1
5C2 Barking & Dagenham PCT	8,611	6,160	71.5	8,701	6,386	73.4
5A9 Barnet PCT	21,830	9,591	43.9	22,011	12,326	56.0
TAK Bexley Care Trust	15,245	11,870	77.9	15,337	11,974	78.1
5K5 Brent Teaching PCT	16,525	7,383	44.7	16,961	8,643	51.0
5A7 Bromley PCT	22,705	17,321	76.3	22,796	17,386	76.3
5K7 Camden PCT	10,769	6,075	56.4	11,042	6,408	58.0
5C3 City & Hackney Teaching PCT	10,499	5,800	55.2	10,849	6,386	58.9
5K9 Croydon PCT	21,569	15,319	71.0	21,871	15,753	72.0
5HX Ealing PCT	18,891	13,070	69.2	19,257	13,168	68.4
5C1 Enfield PCT	17,303	10,273	59.4	17,511	9,298	53.1
5A8 Greenwich Teaching PCT	13,187	8,727	66.2	13,301	8,921	67.1
5H1 Hammersmith & Fulham PCT	8,855	5,369	60.6	8,959	5,384	60.1
5C9 Haringey Teaching PCT	13,766	7,349	53.4	14,291	7,273	50.9
5K6 Harrow PCT	14,706	9,613	65.4	14,830	7,727	52.1
5A4 Havering PCT	18,099	14,351	79.3	18,120	14,332	79.1
5AT Hillingdon PCT	15,499	11,211	72.3	15,799	10,631	67.3
5HY Hounslow PCT	14,062	9,474	67.4	14,215	9,705	68.3
5K8 Islington PCT	9,643	5,813	60.3	9,721	6,478	66.6
5LA Kensington & Chelsea PCT	10,002	5,569	55.7	10,192	5,767	56.6
5A5 Kingston PCT	10,650	7,635	71.7	10,783	7,850	72.8
5LD Lambeth PCT	13,927	8,388	60.2	14,369	8,556	59.5
5LF Lewisham PCT	13,278	8,575	64.6	13,525	8,892	65.7
5C5 Newham PCT	12,530	7,147	57.0	12,775	7,220	56.5
5NA Redbridge PCT	15,295	10,734	70.2	15,447	11,170	72.3
5M6 Richmond & Twickenham PCT	12,301	8,738	71.0	12,348	8,759	70.9
5LE Southwark PCT	11,922	7,442	62.4	12,411	7,726	62.3
5M7 Sutton & Merton PCT	22,905	16,361	71.4	23,395	17,020	72.8
5C4 Tower Hamlets PCT	7,909	4,363	55.2	7,936	5,176	65.2
5NC Waltham Forest PCT	13,264	9,402	70.9	13,520	9,582	70.9
5LG Wandsworth PCT	14,128	9,044	64.0	14,350	9,184	64.0
5LC Westminster PCT	11,265	6,027	53.5	11,395	6,371	55.9
Q37 South East Coast SHA	329,784	255,956	77.6	331,038	253,083	76.5
5LQ Brighton & Hove City PCT	15,461	9,940	64.3	15,673	10,612	67.7
5P7 East Sussex Downs & Weald PCT	28,396	20,453	72.0	28,349	18,651	65.8
5QA Eastern & Coastal Kent PCT	58,015	46,350	79.9	58,115	46,260	79.6
5P8 Hastings & Rother PCT	14,867	11,722	78.8	15,041	8,816	58.6
5L3 Medway PCT	19,448	15,795	81.2	19,649	15,934	81.1
5P5 Surrey PCT	80,275	62,109	77.4	80,654	62,104	77.0
5P9 West Kent PCT	50,764	40,453	79.7	50,798	40,891	80.5
5P6 West Sussex PCT	62,558	49,134	78.5	62,759	49,815	79.4
Q38 South Central SHA	290,190	230,775	79.5	292,433	233,456	79.8
5QG Berkshire East PCT	24,411	19,661	80.5	24,751	19,813	80.0
5QF Berkshire West PCT	31,411	25,559	81.4	31,774	25,641	80.7
5QD Buckinghamshire PCT	37,450	31,111	83.1	37,718	31,295	83.0
5QC Hampshire PCT	98,982	77,405	78.2	99,243	79,325	79.9
5QT Isle of Wight PCT	12,594	10,266	81.5	12,573	10,193	81.1
5CQ Milton Keynes PCT	15,894	12,628	79.5	16,378	12,921	78.9
5QE Oxfordshire PCT	43,244	35,290	81.6	43,552	35,184	80.8
5FE Portsmouth City Teaching PCT	11,842	8,615	72.7	12,010	8,710	72.5
5L1 Southampton City PCT	14,362	10,240	71.3	14,434	10,374	71.9
Q39 South West SHA	414,957	333,213	80.3	415,011	332,391	80.1
5FL Bath & North East Somerset PCT	13,202	10,278	77.9	13,273	10,331	77.8
5QN Bournemouth & Poole PCT	24,973	19,511	78.1	25,040	19,542	78.0
5QJ Bristol PCT	25,147	18,730	74.5	25,210	18,815	74.6
5QP Cornwall & Isles of Scilly PCT	47,826	38,538	80.6	47,574	38,180	80.3
5QQ Devon PCT	63,935	51,516	80.6	63,935	50,791	79.4
5QM Dorset PCT	35,626	28,907	81.1	35,336	28,689	81.2
5QH Gloucestershire PCT	45,678	36,883	80.7	45,777	36,967	80.8
5M8 North Somerset PCT	17,340	14,044	81.0	17,357	13,977	80.5
5F1 Plymouth Teaching PCT	18,300	14,951	81.7	18,365	14,890	81.1
5QL Somerset PCT	44,124	36,407	82.5	44,027	36,315	82.5
5A3 South Gloucestershire PCT	17,701	14,452	81.6	17,723	14,511	81.9
5K3 Swindon PCT	13,140	10,462	79.6	13,431	10,675	79.5
TAL Torbay Care Trust	12,074	9,499	78.7	11,935	9,450	79.2
5QK Wiltshire PCT	35,891	29,035	80.9	36,028	29,258	81.2

Source: KC63

⁽¹⁾ This is the number of women in the registered population less those recorded as ineligible

⁽²⁾ The North London Breast Screening Service was not operational between December 2006 and May 2007 (with reduced screening until October 2007). Coverage for the following PCTs will have been affected; Barnet, Brent, Harrow, Haringey, Enfield and West Hertfordshire.

Table 11a: NHS Breast Screening Programme: coverage of women aged 53-70 by Primary Care Organisation, at 31 March 2008 and 2009

	numbers/percentages					
	As at 31 March 2008			As at 31 March 2009		
	Eligible Population ⁽¹⁾	Number of women screened	Coverage (less than 3 years since last test) (%)	Eligible Population ⁽¹⁾	Number of women screened	Coverage (less than 3 years since last test) (%)
England	5,115,011	3,883,130	75.9	5,166,515	3,954,050	76.5
Q30 North East SHA	269,128	212,115	78.8	271,263	214,062	78.9
5ND County Durham PCT	55,866	44,807	80.2	56,375	44,973	79.8
5J9 Darlington PCT	10,517	8,161	77.6	10,512	8,141	77.4
5KF Gateshead PCT	20,755	16,293	78.5	20,761	16,214	78.1
5D9 Hartlepool PCT	9,209	7,149	77.6	9,268	7,221	77.9
5KM Middlesbrough PCT	13,436	9,702	72.2	13,566	9,910	73.1
5D7 Newcastle PCT	21,841	16,681	76.4	22,081	16,970	76.9
5D8 North Tyneside PCT	21,931	17,141	78.2	22,061	17,442	79.1
TAC Northumberland Care Trust	38,133	31,554	82.7	38,587	32,037	83.0
5QR Redcar & Cleveland PCT	14,864	11,583	77.9	14,886	11,550	77.6
5KG South Tyneside PCT	15,474	11,981	77.4	15,654	12,185	77.8
5E1 Stockton-on-Tees Teaching PCT	18,533	14,475	78.1	18,812	14,719	78.2
5KL Sunderland Teaching PCT	28,569	22,588	79.1	28,700	22,700	79.1
Q31 North West SHA	710,394	530,644	74.7	714,995	541,979	75.8
5HG Ashton, Leigh & Wigan PCT	32,914	24,157	73.4	33,007	25,173	76.3
5CC Blackburn with Darwen PCT	13,699	9,465	69.1	13,864	9,854	71.1
5HP Blackpool PCT	15,250	9,274	60.8	15,272	11,115	72.8
5HQ Bolton PCT	27,163	21,149	77.9	27,362	20,821	76.1
5JX Bury PCT	19,000	14,897	78.4	19,105	15,015	78.6
5NP Central & Eastern Cheshire PCT	50,055	41,229	82.4	50,457	41,167	81.6
5NG Central Lancashire PCT	46,253	33,638	72.7	46,671	34,653	74.2
5NE Cumbria PCT	59,629	46,815	78.5	59,985	49,223	82.1
5NH East Lancashire PCT	38,225	28,142	73.6	38,571	28,709	74.4
5NM Halton & St Helens PCT	32,929	25,042	76.0	33,245	24,498	73.7
5NQ Heywood, Middleton & Rochdale PCT	19,927	14,141	71.0	20,219	15,009	74.2
5J4 Knowsley PCT	14,210	9,814	69.1	14,285	9,897	69.3
5NL Liverpool PCT	41,607	29,568	71.1	42,094	30,011	71.3
5NT Manchester PCT	33,624	21,346	63.5	33,931	21,804	64.3
5NF North Lancashire PCT	37,131	28,302	76.2	37,221	28,984	77.9
5J5 Oldham PCT	21,689	15,887	73.2	21,837	16,407	75.1
5F5 Salford PCT	20,268	14,519	71.6	20,305	14,503	71.4
5NJ Sefton PCT	30,442	22,606	74.3	30,483	22,789	74.8
5F7 Stockport PCT	29,859	22,729	76.1	30,095	22,891	76.1
5LH Tameside & Glossop PCT	22,931	17,130	74.7	23,020	17,571	76.3
5NR Trafford PCT	21,548	15,815	73.4	21,652	16,444	75.9
5J2 Warrington PCT	20,134	15,688	77.9	20,115	15,746	78.3
5NN Western Cheshire PCT	26,910	21,742	80.8	26,996	21,988	81.4
5NK Wirral PCT	34,997	27,549	78.7	35,203	27,707	78.7
Q32 Yorkshire & the Humber SHA	518,911	394,823	76.1	523,065	408,790	78.2
5JE Barnsley PCT	24,656	20,415	82.8	24,831	20,431	82.3
5NY Bradford & Airedale Teaching PCT	42,874	31,174	72.7	43,351	31,584	72.9
5J6 Calderdale PCT	20,279	14,252	70.3	20,702	15,739	76.0
5N5 Doncaster PCT	30,687	23,214	75.6	30,864	24,704	80.0
5NW East Riding of Yorkshire PCT	37,835	27,542	72.8	38,088	30,808	80.9
5NX Hull Teaching PCT	24,830	17,980	72.4	25,108	18,098	72.1
5N2 Kirklees PCT	38,068	29,301	77.0	38,356	30,157	78.6
5N1 Leeds PCT	66,545	49,165	73.9	67,035	49,280	73.5
TAN North East Lincolnshire PCT	16,971	9,607	56.6	17,041	12,966	76.1
5EF North Lincolnshire PCT	18,033	12,813	71.1	18,209	14,393	79.0
5NV North Yorkshire & York PCT	87,599	72,334	82.6	88,434	72,899	82.4
5H8 Rotherham PCT	25,891	21,269	82.1	25,967	21,288	82.0
5N4 Sheffield PCT	49,394	38,641	78.2	49,489	38,756	78.3
5N3 Wakefield District PCT	35,249	27,116	76.9	35,590	27,687	77.8
Q33 East Midlands SHA	451,828	360,877	79.9	457,112	370,971	81.2
5ET Bassetlaw PCT	12,258	9,858	80.4	12,378	10,063	81.3
5N7 Derby City PCT	25,830	20,810	80.6	26,047	21,291	81.7
5N6 Derbyshire County PCT	76,770	63,077	82.2	77,548	63,583	82.0
5PC Leicester City PCT	24,807	18,560	74.8	25,254	18,919	74.9
5PA Leicestershire County & Rutland PCT	70,003	58,479	83.5	70,974	59,858	84.3
5N9 Lincolnshire PCT	84,933	62,458	73.5	85,626	69,781	81.5
5PD Northamptonshire PCT	65,690	53,458	81.4	66,770	54,124	81.1
5EM Nottingham City PCT	21,819	16,540	75.8	21,700	15,597	71.9
5N8 Nottinghamshire County PCT	69,718	57,637	82.7	70,815	57,755	81.6
Q34 West Midlands SHA	550,528	424,308	77.1	555,215	427,741	77.0
5PG Birmingham East & North PCT	35,821	25,927	72.4	35,880	25,941	72.3
5MD Coventry Teaching PCT	28,389	20,699	72.9	28,609	20,454	71.5
5PE Dudley PCT	32,585	25,019	76.8	32,674	24,906	76.2
5MX Heart of Birmingham Teaching PCT	16,366	10,807	66.0	16,554	11,054	66.8
5CN Herefordshire PCT	20,625	16,756	81.2	20,923	16,796	80.3
5PH North Staffordshire PCT	23,342	18,425	78.9	23,610	18,453	78.2
5PF Sandwell PCT	28,679	19,362	67.5	28,877	20,079	69.5
5M2 Shropshire County PCT	34,412	28,528	82.9	34,776	29,052	83.5
TAM Solihull Care Trust	22,687	17,666	77.9	22,857	17,827	78.0
5M1 South Birmingham PCT	31,348	22,857	72.9	31,562	23,551	74.6
5PK South Staffordshire PCT	66,235	53,711	81.1	67,017	54,120	80.8
5PJ Stoke on Trent PCT	26,063	19,979	76.7	26,182	19,970	76.3
5MK Telford & Wrekin PCT	16,403	12,924	78.8	16,617	13,474	81.1
5M3 Walsall Teaching PCT	24,997	18,221	72.9	25,091	18,568	74.0
5PM Warwickshire PCT	56,982	45,249	79.4	57,628	45,472	78.9
5MV Wolverhampton City PCT	22,817	16,525	72.4	22,790	16,427	72.1
5PL Worcestershire PCT	62,777	51,653	82.3	63,568	51,597	81.2

continued

Table 11a: NHS Breast Screening Programme: coverage of women aged 53-70 by Primary Care Organisation, at 31 March 2008 and 2009

	numbers/percentages					
	As at 31 March 2008			As at 31 March 2009		
	Eligible Population ⁽¹⁾	Number of women screened	Coverage (less than 3 years since last test) (%)	Eligible Population ⁽¹⁾	Number of women screened	Coverage (less than 3 years since last test) (%)
England	5,115,011	3,883,130	75.9	5,166,515	3,954,050	76.5
Q35 East of England SHA	590,822	460,216	77.9	597,222	468,488	78.4
5P2 Bedfordshire PCT	40,811	32,504	79.6	41,553	33,111	79.7
5PP Cambridgeshire PCT	58,158	46,434	79.8	59,004	46,995	79.6
5P3 East & North Hertfordshire PCT	52,954	40,491	76.5	53,418	41,784	78.2
5PR Great Yarmouth & Waveney Teaching PCT	26,798	21,362	79.7	26,862	21,251	79.1
5GC Luton Teaching PCT	14,464	10,875	75.2	14,547	10,941	75.2
5PX Mid Essex PCT	38,553	31,777	82.4	39,127	32,253	82.4
5PQ Norfolk PCT	85,957	69,173	80.5	86,561	70,198	81.1
5PW North East Essex PCT	35,332	28,748	81.4	35,697	29,124	81.6
5PN Peterborough PCT	13,830	10,828	78.3	14,136	10,871	76.9
5P1 South East Essex PCT	38,185	28,054	73.5	38,294	28,236	73.7
5PY South West Essex PCT	39,705	28,726	72.3	39,905	29,668	74.3
5PT Suffolk PCT	66,862	54,423	81.4	67,646	55,001	81.3
5PV West Essex PCT	27,326	17,996	65.9	27,777	21,745	78.3
5P4 West Hertfordshire PCT	51,887	38,825	74.8	52,695	37,310	70.8
Q36 London SHA⁽²⁾	599,309	381,077	63.6	607,605	391,676	64.5
5C2 Barking & Dagenham PCT	11,782	8,252	70.0	11,762	8,460	71.9
5A9 Barnet PCT	29,615	12,535	42.3	30,024	16,624	55.4
TAK Bexley Care Trust	21,073	16,295	77.3	21,193	16,382	77.3
5K5 Brent Teaching PCT	22,756	10,023	44.0	23,125	11,618	50.2
5A7 Bromley PCT	31,124	23,529	75.6	31,397	23,682	75.4
5K7 Camden PCT	14,519	8,048	55.4	14,844	8,538	57.5
5C3 City & Hackney Teaching PCT	13,992	7,617	54.4	14,326	8,364	58.4
5K9 Croydon PCT	29,301	20,449	69.8	29,634	21,176	71.5
5HX Ealing PCT	25,749	17,516	68.0	26,153	17,639	67.4
5C1 Enfield PCT	23,792	13,951	58.6	24,059	12,885	53.6
5A8 Greenwich Teaching PCT	17,829	11,758	65.9	17,872	11,892	66.5
5H1 Hammersmith & Fulham PCT	12,000	7,188	59.9	12,241	7,321	59.8
5C9 Haringey Teaching PCT	18,586	9,742	52.4	19,116	9,691	50.7
5K6 Harrow PCT	20,304	13,012	64.1	20,500	10,453	51.0
5A4 Havering PCT	24,930	19,640	78.8	25,088	19,800	78.9
5AT Hillingdon PCT	21,204	15,192	71.6	21,498	14,389	66.9
5HY Hounslow PCT	18,817	12,473	66.3	19,007	12,804	67.4
5K8 Islington PCT	13,030	7,694	59.0	13,151	8,577	65.2
5LA Kensington & Chelsea PCT	13,514	7,472	55.3	13,773	7,805	56.7
5A5 Kingston PCT	14,126	10,091	71.4	14,386	10,463	72.7
5LD Lambeth PCT	18,928	11,274	59.6	19,420	11,500	59.2
5LF Lewisham PCT	18,349	11,703	63.8	18,551	12,078	65.1
5C5 Newham PCT	16,763	9,415	56.2	17,068	9,486	55.6
5NA Redbridge PCT	20,672	14,497	70.1	20,885	14,962	71.6
5M6 Richmond & Twickenham PCT	16,202	11,425	70.5	16,454	11,551	70.2
5LE Southwark PCT	16,225	9,970	61.4	16,667	10,277	61.7
5M7 Sutton & Merton PCT	31,063	21,906	70.5	31,644	22,779	72.0
5C4 Tower Hamlets PCT	10,907	5,827	53.4	10,797	6,856	63.5
5NC Waltham Forest PCT	18,034	12,620	70.0	18,297	12,866	70.3
5LG Wandsworth PCT	19,082	12,043	63.1	19,409	12,320	63.5
5LC Westminster PCT	15,041	7,920	52.7	15,264	8,438	55.3
Q37 South East Coast SHA	454,753	348,931	76.7	459,518	349,624	76.1
5LQ Brighton & Hove City PCT	21,089	13,431	63.7	21,356	14,350	67.2
5P7 East Sussex Downs & Weald PCT	39,775	28,672	72.1	40,118	26,222	65.4
5QA Eastern & Coastal Kent PCT	80,166	63,057	78.7	81,084	64,459	79.5
5P8 Hastings & Rother PCT	20,915	16,487	78.8	21,212	12,248	57.7
5L3 Medway PCT	26,065	21,031	80.7	26,419	21,322	80.7
5P5 Surrey PCT	109,844	84,438	76.9	110,999	85,001	76.6
5P9 West Kent PCT	69,634	54,962	78.9	70,181	56,336	80.3
5P6 West Sussex PCT	87,265	66,853	76.6	88,149	69,686	79.1
Q38 South Central SHA	395,443	313,060	79.2	400,947	319,213	79.6
5QG Berkshire East PCT	32,884	26,368	80.2	33,464	26,702	79.8
5QF Berkshire West PCT	42,101	33,963	80.7	42,833	34,422	80.4
5QD Buckinghamshire PCT	50,921	42,218	82.9	51,781	42,898	82.8
5QC Hampshire PCT	136,094	106,171	78.0	137,394	109,602	79.8
5QT Isle of Wight PCT	17,715	14,342	81.0	17,892	14,402	80.5
5CQ Milton Keynes PCT	20,489	16,193	79.0	21,199	16,650	78.5
5QE Oxfordshire PCT	59,228	48,069	81.2	60,152	48,444	80.5
5FE Portsmouth City Teaching PCT	16,393	11,812	72.1	16,546	11,959	72.3
5L1 Southampton City PCT	19,618	13,924	71.0	19,686	14,134	71.8
Q39 South West SHA	573,895	457,079	79.6	579,573	461,506	79.6
5FL Bath & North East Somerset PCT	18,130	13,925	76.8	18,395	14,197	77.2
5QN Bournemouth & Poole PCT	34,521	26,644	77.2	34,893	27,016	77.4
5QJ Bristol PCT	34,366	25,316	73.7	34,609	25,652	74.1
5QP Cornwall & Isles of Scilly PCT	65,741	52,546	79.9	66,240	52,827	79.8
5QQ Devon PCT	89,260	71,432	80.0	90,160	71,242	79.0
5QM Dorset PCT	50,327	40,492	80.5	50,424	40,666	80.6
5QH Gloucestershire PCT	62,963	50,459	80.1	63,697	51,167	80.3
5M8 North Somerset PCT	23,888	19,155	80.2	24,127	19,290	80.0
5F1 Plymouth Teaching PCT	25,243	20,511	81.3	25,430	20,508	80.6
5QL Somerset PCT	61,184	50,231	82.1	61,714	50,645	82.1
5A3 South Gloucestershire PCT	24,418	19,645	80.5	24,782	20,108	81.1
5K3 Swindon PCT	17,740	14,027	79.1	18,223	14,463	79.4
TAL Torbay Care Trust	16,966	13,224	77.9	17,000	13,391	78.8
5QK Wiltshire PCT	49,148	39,472	80.3	49,879	40,334	80.9

Source: KC63

⁽¹⁾ This is the number of women in the registered population less those recorded as ineligible⁽²⁾ The North London Breast Screening Service was not operational between December 2006 and May 2007 (with reduced screening until October 2007). Coverage for the following PCTs will have been affected; Barnet, Brent, Harrow, Haringey, Enfield and West Hertfordshire.

Table 12: NHS Breast Screening Programme: uptake by women aged 50-64 of invitations to screen, by Breast Screening Unit, 1998-99 to 2008-09⁽¹⁾

Breast Screening Unit	1998-99	1999-2000	2000-01	2001-02	2002-03	2003-04	2004-05	2005-06	2006-07	2007-08	2008-09	percentages
												⁽²⁾ Change 2007-08 to 2008-09
England	76	76	75	76	75	76	75	75	74	74	74	0
North East	80	81	79	79	78	78	78	78	78	77	77	0
Gateshead	78	78	79	80	79	78	79	78	79	78	76	-1
Newcastle	80	83	80	80	82	79	78	81	79	77	79	3
North Tees	81	81	79	79	74	78	78	76	77	76	75	0
North West	77	75	75	76	75	75	75	75	74	73	74	1
Bolton, Bury & Rochdale	76	75	77	74	75	76	73	75	74	71	73	1
Chester	81	82	88	84	79	77	79	78	77	79	77	-2
Crewe	83	81	83	83	81	83	82	80	81	80	79	-2
East Cheshire & Stockport	80	79	77	78	77	75	76	79	74	74	77	3
East Lancashire	75	75	73	75	74	74	74	74	70	73	71	-2
Greater Manchester	75	73	69	71	71	71	70	70	68	68	69	2
Liverpool	71	73	73	71	74	72	69	72	72	67	73	5
North Cumbria	81	81	81	81	80	80	81	80	81	80	80	-1
North Lancashire	76	77	78	77	77	77	77	77	76	75	74	-1
Warrington	77	75	76	77	74	76	76	74	75	75	73	-1
Wigan	79	77	77	81	77	76	78	74	74	76	74	-2
Wirral	81	75	77	82	77	78	79	76	78	78	76	-2
Yorkshire & the Humber	77	77	79	76	77	78	77	77	78	75	75	0
Barnsley	82	81	82	83	82	83	82	81	79	82	81	-1
Doncaster	81	82	81	81	82	81	79	79	78	77	78	1
Humberside	79	76	78	79	75	78	78	76	76	76	74	-2
Leeds Wakefield	72	74	76	71	73	75	71	76	76	71	74	3
North Yorkshire	82	81	80	81	81	81	81	81	80	81	80	0
Pennine	73	73	78	72	73	78	73	74	79	71	72	0
Rotherham	83	79	79	83	80	81	84	81	80	82	80	-1
Sheffield	78	80	79	76	80	79	76	79	77	74	78	4
East Midlands	81	81	81	82	81	81	80	80	78	79	79	0
Boston (South Lincolnshire)	⁽³⁾ 82	78	80	79	78	80
Derby City & South Derbyshire	84	83	83	82	82	82	81	81	81	80	81	1
Kettering	81	80	78	79	78	78	80	78	77	78	76	-2
Leicestershire	81	85	81	82	84	81	81	82	78	81	82	1
Lincolnshire	⁽³⁾	81	78	77	79	77	-1
North Derbyshire & Chesterfield	81	81	80	82	80	80	80	80	77	78	78	1
North Lincolnshire	⁽³⁾ 80	80	81	83	78	82
North Nottinghamshire	81	80	80	81	81	80	80	79	80	78	80	2
Northampton	79	78	78	79	77	78	78	79	79	78	77	-1
Nottingham City	83	81	81	83	80	81	81	78	78	79	77	-2
West Midlands	77	77	76	77	77	76	76	76	76	75	74	0
City, Sandwell & Walsall	⁽⁴⁾	71	67	-4
City Hospital (Birmingham)	⁽⁴⁾ 68	69	69	70	69	71	69	68	69	.	.	.
Dudley & Wolverhampton	75	72	74	73	73	75	74	75	76	73	74	1
Hereford & Worcester	82	82	83	82	82	83	80	80	82	80	80	0
Mid Staffordshire	⁽⁵⁾ 81	84	81	81
North Staffordshire	76	78	76	75	76	78	75	78	75	74	76	2
Shropshire	82	80	81	82	82	78	82	81	82	80	79	0
South Birmingham	71	72	66	72	75	70	71	74	68	71	73	1
South Staffordshire	81	80	80	80	81	80	80	80	79	77	79	2
Walsall & Sandwell	⁽⁴⁾ 76	74	70	76	73	69	75	74	69	.	.	.
Warwickshire, Solihull & Coventry	78	77	78	78	76	77	74	75	74	72	73	1
East of England	77	77	76	77	77	77	77	78	77	77	77	0
Beds & Herts	78	76	75	77	76	74	76	76	74	76	75	-1
Cambridge & Huntingdon	77	77	78	77	76	79	78	78	78	78	76	-1
Colchester & Chelmsford	80	79	80	81	79	81	80	79	80	80	79	-1
East Suffolk	81	81	80	81	81	81	81	82	81	81	80	-1
Epping	72	74	73	71	75	73	67	76	75	75	73	-2
James Paget	78	78	78	79	81	79	77	80	80	76	78	2
Kings Lynn	79	79	79	80	80	80	79	80	79	76	79	3
Norfolk & Norwich	82	81	80	80	81	81	80	82	81	80	81	1
Peterborough	81	80	78	81	82	80	79	82	79	77	80	2
South Essex (Southend)	67	69	66	69	67	69	71	69	68	71	69	-3
West Suffolk	80	79	79	79	80	79	79	80	77	77	78	1

Table 12: NHS Breast Screening Programme: uptake by women aged 50-64 of invitations to screen, by Breast Screening Unit, 1998-99 to 2008-09⁽¹⁾

Breast Screening Unit	1998-99	1999-2000	2000-01	2001-02	2002-03	2003-04	2004-05	2005-06	2006-07	2007-08	2008-09	percentages
												(2) Change 2007-08 to 2008-09
England	76	76	75	76	75	76	75	75	74	74	74	0
London	63	62	62	63	61	63	62	62	61	61	61	0
Barking, Havering, Redbridge & Brentwood	76	71	75	77	72	76	75	72	74	74	67	-6
Central & East London	(6) 49	50	46	51	51	50	49	54	53	54	56	3
North London	(7) 65	63	65	64	63	65	62	63	60	60	60	1
North Middlesex	(7) 60	61	63	63	63
South East London	(8) 65	64	67	65	63	65
South East London (Kings College Hospital)	(8)	61	63	62	60	61	1
South East London (Queen Mary's Sidcup)	(8)	67	66	72	68	65	-3
South West London	71	66	68	66	64	66	68	66	62	65	65	0
West of London	56	58	54	54	56	56	56	59	54	57	57	0
Whipps Cross	(6) 73	73	67	74	72	68	72
South East Coast	78	76	76	76	76	77	77	77	75	74	75	0
Canterbury	(9)	76	78	77	77	75	75	76	1
Canterbury & Kent	(9) 78	77	75	76
East Sussex/Brighton	77	77	78	77	77	79	76	77	76	71	68	-2
Guildford	78	72	72	74	74	75	76	76	73	72	74	1
Maidstone	(9)	78	79	79	80	75	78	79	1
Medway	(9)	78	78	79	80	75	77	78	2
Worthing	78	78	78	79	77	78	79	78	75	77	76	-1
South Central	79	78	79	77	77	78	76	77	77	75	76	1
Aylesbury	82	79	81	80	80	79	79	80	78	79	79	0
Basingstoke	(10) 78	77	79	79	82	77	79
East Berkshire	78	74	75	73	76	76	74	77	76	74	75	1
Isle of Wight	82	81	82	81	81	81	76	80	79	78	78	1
Milton Keynes	82	74	78	78	73	78	75	75	77	72	77	5
North & Mid Hampshire	(10)	79	78	78	78	0
Oxford	80	79	77	78	77	77	77	78	78	77	77	0
Portsmouth	76	78	79	72	75	77	70	75	76	70	74	4
Southampton & Salisbury	79	79	81	78	76	79	73	74	76	73	75	2
West Berkshire	80	78	80	79	77	79	78	77	79	77	75	-3
Winchester	(10) 79	79	79	79	82	75	79
Wycombe	80	82	81	81	80	81	81	81	80	80	79	-1
South West	79	78	78	78	77	78	78	79	76	76	77	1
Avon	79	77	78	79	77	77	78	78	70	76	75	-1
Cornwall	78	78	77	76	76	77	76	77	76	76	77	1
Dorset	80	78	78	76	76	79	76	78	76	72	76	3
Gloucestershire	80	78	78	80	77	78	79	78	78	78	78	-1
North & Eastern Devon	79	79	75	74	76	79	78	79	77	71	76	5
Somerset	81	82	81	80	79	80	81	80	79	80	79	-1
South Devon (Torbay)	(11)	78	79	76	77	76	-1
West Devon & East Cornwall	79	77	79	80	78	78	79	81	80	78	79	1
Wiltshire	80	79	78	79	79	79	79	80	78	79	79	0

Source: KC62 (Part 1, Tables A, B, C1 and C2)

⁽¹⁾ This is the grouping used in Table 3 (First & all routine invitations)

⁽²⁾ All percentages are shown rounded to the nearest whole number; the difference between 2007-08 and 2008-09 uptake are calculated using the exact percentages for those years and then rounded

⁽³⁾ Data for Boston and North Lincolnshire are now provided in a single return from Lincolnshire BSU

⁽⁴⁾ Data for City Hospital (Birmingham) and Walsall & Sandwell are now provided in a single return from City, Sandwell and Walsall BSU

⁽⁵⁾ Uptake based on data from Mid Staffordshire and South East Staffordshire

⁽⁶⁾ Data for Whipps Cross are now included with Central & East London

⁽⁷⁾ Data for North Middlesex are now included with North London

⁽⁸⁾ Data for South East London are now provided by Kings College and Queen Mary's separately

⁽⁹⁾ Data for Canterbury & Kent are now provided by Canterbury, Maidstone and Medway separately

⁽¹⁰⁾ Data for Winchester and Basingstoke are now provided by North & Mid Hampshire

⁽¹¹⁾ South Devon (Torbay) began screening in 2004-05

Table 12a: NHS Breast Screening Programme: uptake by women aged 50-70 of invitations to screen, by Breast Screening Unit, 2002-03 to 2008-09⁽¹⁾

Breast Screening Unit	2002-03	2003-04	2004-05	2005-06	2006-07	2007-08	2008-09	percentages
								(2) Change 2007-08 to 2008-09
England	75	75	74	75	74	73	74	0
North East	78	77	76	77	78	76	76	0
Gateshead	78	77	76	77	78	77	75	-1
Newcastle	82	78	77	80	79	76	79	3
North Tees	74	76	76	75	76	75	75	0
North West	75	75	74	74	73	72	73	1
Bolton, Bury & Rochdale	74	74	72	74	74	71	72	1
Chester	79	77	79	78	76	78	77	-2
Crewe	80	82	81	79	81	80	78	-2
East Cheshire & Stockport	76	74	75	78	73	74	77	3
East Lancashire	74	73	73	73	70	72	71	-2
Greater Manchester	70	70	69	69	67	67	69	1
Liverpool	74	72	68	71	70	66	72	6
North Cumbria	80	80	81	80	80	80	79	-1
North Lancashire	78	77	77	76	75	75	74	-1
Warrington	74	76	75	74	74	74	73	-1
Wigan	77	76	77	73	74	75	74	-2
Wirral	77	77	77	75	77	77	75	-2
Yorkshire & the Humber	76	78	76	77	77	75	75	0
Barnsley	82	82	81	80	79	81	80	-1
Doncaster	82	81	79	79	77	76	77	1
Humberside	75	77	77	75	75	75	74	-2
Leeds Wakefield	72	74	70	75	76	70	74	4
North Yorkshire	81	81	81	81	79	80	80	0
Pennine	73	78	73	73	78	71	71	0
Rotherham	79	79	82	80	78	81	79	-1
Sheffield	80	79	76	78	77	74	78	4
East Midlands	80	80	80	79	78	79	78	0
Boston (South Lincolnshire)	⁽³⁾ 78	79
Derby City & South Derbyshire	82	82	81	81	80	80	81	1
Kettering	78	78	79	77	77	78	76	-2
Leicestershire	84	81	81	81	77	80	81	1
Lincolnshire	⁽³⁾ .	.	81	78	76	78	77	-1
North Derbyshire & Chesterfield	80	80	79	79	76	77	78	0
North Lincolnshire	⁽³⁾ 78	82
North Nottinghamshire	81	80	79	78	79	77	79	2
Northampton	77	78	77	78	78	78	77	-1
Nottingham City	78	80	80	77	78	78	76	-2
West Midlands	76	76	75	76	75	74	74	0
City, Sandwell & Walsall	⁽⁴⁾	71	66	-5
City Hospital (Birmingham)	⁽⁴⁾ 69	71	68	68	69	.	.	.
Dudley & Wolverhampton	73	73	73	74	75	72	73	1
Hereford & Worcester	82	83	80	80	81	80	79	0
North Staffordshire	76	76	74	77	74	73	75	2
Shropshire	82	78	82	80	82	79	79	0
South Birmingham	74	68	70	73	68	71	72	2
South Staffordshire	81	80	80	79	78	76	79	3
Walsall & Sandwell	⁽⁴⁾ 73	69	75	74	68	.	.	.
Warwickshire, Solihull & Coventry	75	77	74	74	73	72	73	1
East of England	77	76	76	77	76	77	76	0
Beds & Herts	76	74	76	76	73	75	75	-1
Cambridge & Huntingdon	76	79	76	77	78	77	76	-1
Colchester & Chelmsford	79	81	79	79	79	80	79	-1
East Suffolk	80	79	81	81	80	81	80	-1
Epping	75	71	66	76	74	75	73	-2
James Paget	81	78	76	80	79	76	79	2
Kings Lynn	80	79	78	80	77	76	79	3
Norfolk & Norwich	79	79	79	81	80	80	81	1
Peterborough	81	79	78	81	79	78	79	1
South Essex (Southend)	67	69	70	69	68	71	69	-2
West Suffolk	80	78	78	79	77	77	78	1

Table 12a: NHS Breast Screening Programme: uptake by women aged 50-70 of invitations to screen, by Breast Screening Unit, 2002-03 to 2008-09⁽¹⁾

Breast Screening Unit	2002-03	2003-04	2004-05	2005-06	2006-07	2007-08	2008-09	percentages
								(2) Change 2007-08 to 2008-09
England	75	75	74	75	74	73	74	0
London	61	63	61	62	60	61	61	0
Barking, Havering, Redbridge & Brentwood	72	76	75	70	73	73	67	-6
Central & East London ⁽⁵⁾	51	50	48	53	52	52	56	3
North London ⁽⁶⁾	63	65	62	63	59	59	60	1
North Middlesex ⁽⁶⁾	63
South East London ⁽⁷⁾	61	64
South East London (Kings College Hospital) ⁽⁷⁾	.	.	59	62	62	59	61	2
South East London (Queen Mary's Sidcup) ⁽⁷⁾	.	.	67	66	71	68	65	-3
South West London	64	66	67	65	62	64	65	0
West of London	56	56	56	58	54	56	57	0
Whipps Cross ⁽⁵⁾	72	67	70
South East Coast	76	77	77	77	74	74	75	0
Canterbury	76	78	77	77	75	75	76	1
East Sussex/Brighton	77	79	75	76	77	71	68	-3
Guildford	74	75	75	75	72	72	73	1
Maidstone	78	79	79	80	76	78	79	1
Medway	78	78	79	79	75	76	78	2
Worthing	77	78	79	78	74	77	76	-1
South Central	77	78	76	77	77	75	76	1
Aylesbury	80	79	79	79	77	79	79	0
Basingstoke ⁽⁸⁾	81	77	79
East Berkshire	75	76	74	77	76	74	75	1
Isle of Wight	81	81	75	79	78	77	78	1
Milton Keynes	72	77	75	74	76	72	77	5
North & Mid Hampshire ⁽⁸⁾	.	.	.	79	78	77	78	0
Oxford	77	77	77	78	77	76	77	0
Portsmouth	75	77	69	75	76	70	74	5
Southampton & Salisbury	76	79	73	74	76	72	75	2
West Berkshire	77	79	78	76	78	77	74	-3
Winchester ⁽⁸⁾	82	75	79
Wycombe	80	81	81	81	80	80	79	-1
South West	77	78	78	78	75	76	76	1
Avon	78	77	78	78	70	75	74	-1
Cornwall	76	77	76	76	75	75	76	1
Dorset	75	78	76	78	76	72	75	3
Gloucestershire	76	77	79	77	78	78	77	-1
North & Eastern Devon	76	79	78	78	76	71	76	5
Somerset	79	80	80	80	79	80	79	-1
South Devon (Torbay) ⁽⁹⁾	.	.	78	78	76	76	75	-1
West Devon & East Cornwall	78	78	79	80	79	78	79	1
Wiltshire	79	78	79	80	77	78	78	0

Source: KC62 (Part 1, Tables A, B, C1 and C2)

⁽¹⁾ This is the grouping used in Table 3 (First & all routine invitations)

⁽²⁾ All percentages are shown rounded to the nearest whole number;

the difference between 2007-08 and 2008-09 uptake are calculated using the exact percentages for those years and then rounded

⁽³⁾ Data for Boston and North Lincolnshire are now provided in a single return from Lincolnshire BSU

⁽⁴⁾ Data for City Hospital (Birmingham) and Walsall & Sandwell are now provided in a single return from City, Sandwell and Walsall BSU

⁽⁵⁾ Data for Whipps Cross are now included with Central & East London

⁽⁶⁾ Data for North Middlesex are now included with North London

⁽⁷⁾ Data for South East London are now provided by Kings College and Queen Mary's separately

⁽⁸⁾ Data for Winchester and Basingstoke are now provided by North & Mid Hampshire

⁽⁹⁾ South Devon (Torbay) began screening in 2004-05

Table 13: NHS Breast Screening Programme: uptake by women aged 50-64 by type of invitation and Breast Screening Unit, 2008-09

Breast Screening Unit	percentages						
	Invitation type					Invitation type grouping	
	First invitation for screening	Routine invitation (previous non-attender)	Routine invitation (within 5 yrs)	Routine invitation (more than 5 yrs)	Early Recall Invitations	First & routine invitation (within 5 yrs)	First & all routine invitations ⁽¹⁾
England	70	20	87	48	99	83	74
North East	74	21	89	50	100	86	77
Gateshead	74	18	88	51	100	85	76
Newcastle	75	23	90	50	100	87	79
North Tees	74	21	88	49	100	85	75
North West	71	18	88	46	100	84	74
Bolton, Bury & Rochdale	70	16	87	41	100	83	73
Chester	76	15	90	40	-	87	77
Crewe	77	17	90	35	100	87	79
East Cheshire & Stockport	72	20	89	49	100	86	77
East Lancashire	69	20	85	48	100	81	71
Greater Manchester	67	18	86	43	100	81	69
Liverpool	71	19	88	43	100	84	73
North Cumbria	78	22	90	54	100	88	80
North Lancashire	70	19	88	54	100	84	74
Warrington	72	18	88	44	100	84	73
Wigan	72	19	88	49	100	84	74
Wirral	75	15	90	41	100	87	76
Yorkshire & the Humber	72	19	88	44	99	85	75
Barnsley	77	20	91	45	-	88	81
Doncaster	76	19	88	47	100	86	78
Humberside	71	18	88	42	100	84	74
Leeds Wakefield	70	19	88	42	100	84	74
North Yorkshire	76	22	91	47	100	88	80
Pennine	69	18	87	42	97	83	72
Rotherham	79	19	90	46	-	88	80
Sheffield	74	19	90	46	100	86	78
East Midlands	76	21	89	51	100	86	79
Derby City & South Derbyshire	79	21	90	59	100	88	81
Kettering	76	22	86	45	100	84	76
Leicestershire	79	21	92	58	100	89	82
Lincolnshire	72	22	87	46	100	84	77
North Derbyshire & Chesterfield	76	23	89	52	100	86	78
North Nottinghamshire	78	22	91	44	100	88	80
Northampton	74	22	88	45	100	85	77
Nottingham City	72	20	89	47	-	85	77
West Midlands	71	19	88	48	100	84	74
City, Sandwell & Walsall	64	20	82	44	100	77	67
Dudley & Wolverhampton	72	16	89	51	100	85	74
Hereford & Worcester	75	18	91	48	100	88	80
North Staffordshire	74	16	88	49	100	86	76
Shropshire	77	19	91	48	-	88	79
South Birmingham	71	18	88	41	100	84	73
South Staffordshire	76	21	90	51	100	87	79
Warwickshire, Solihull & Coventry	70	20	86	49	100	83	73
East of England	72	21	89	53	100	85	77
Beds & Herts	72	21	88	47	100	84	75
Cambridge & Huntingdon	72	24	88	60	100	83	76
Colchester & Chelmsford	75	19	89	48	100	87	79
East Suffolk	77	23	91	50	100	87	80
Epping	69	22	86	61	100	81	73
James Paget	74	15	91	62	100	87	78
Kings Lynn	73	17	90	50	100	87	79
Norfolk & Norwich	77	20	92	64	100	89	81
Peterborough	74	20	91	58	100	87	80
South Essex (Southend)	63	22	85	43	100	80	69
West Suffolk	73	18	90	58	100	86	78

Table 13: NHS Breast Screening Programme: uptake by women aged 50-64 by type of invitation and Breast Screening Unit, 2008-09

Breast Screening Unit	percentages						
	Invitation type					Invitation type grouping	
	First invitation for screening	Routine invitation (previous non-attender)	Routine invitation (within 5 yrs)	Routine invitation (more than 5 yrs)	Early Recall Invitations	First & routine invitation (within 5 yrs)	First & all routine invitations ⁽¹⁾
England	70	20	87	48	99	83	74
London	57	18	80	42	100	73	61
Barking, Havering, Redbridge & Brentwood	60	21	88	48	100	77	67
Central & East London	53	21	76	44	100	68	56
North London	58	19	78	41	100	71	60
South East London (Kings College Hospital)	57	15	81	34	100	74	61
South East London (Queen Mary's Sidcup)	62	16	83	35	100	78	65
South West London	61	19	82	43	100	76	65
West of London	52	18	78	44	100	70	57
South East Coast	69	21	88	52	100	84	75
Canterbury	72	24	87	46	100	84	76
East Sussex/Brighton	62	18	83	35	100	78	68
Guildford	67	20	87	61	100	82	74
Maidstone	74	22	90	46	100	87	79
Medway	74	24	90	51	100	86	78
Worthing	70	21	88	49	100	84	76
South Central	71	22	88	46	99	84	76
Aylesbury	77	20	90	44	100	87	79
East Berkshire	71	19	87	45	100	83	75
Isle of Wight	75	20	89	59	100	86	78
Milton Keynes	75	20	87	41	100	85	77
North & Mid Hampshire	75	21	88	52	100	85	78
Oxford	71	21	88	47	100	85	77
Portsmouth	70	23	87	46	100	84	74
Southampton & Salisbury	67	25	88	45	96	83	75
West Berkshire	70	21	87	44	100	83	75
Wycombe	75	22	87	37	100	85	79
South West	74	22	88	53	98	85	77
Avon	71	22	87	43	100	84	75
Cornwall	74	22	89	53	100	86	77
Dorset	73	19	87	52	97	84	76
Gloucestershire	77	21	90	45	98	87	78
North & Eastern Devon	70	24	88	63	100	84	76
Somerset	75	22	90	57	100	87	79
South Devon (Torbay)	73	21	88	48	100	84	76
West Devon & East Cornwall	77	23	89	54	50	87	79
Wiltshire	75	21	90	60	100	86	79

Source : KC62 (Part 1, Tables A to D)

⁽¹⁾ This is the grouping used in Table 3 (First & all routine invitations)

"-" Denotes no invitations sent in the period

Copyright © 2010, The Health and Social Care Information Centre. All rights reserved

Table 13a: NHS Breast Screening Programme: uptake by women aged 50-70 by type of invitation and Breast Screening Unit, 2008-09

percentages

Breast Screening Unit	Invitation type					Invitation type grouping	
	First invitation for screening	Routine invitation (previous non-attender)	Routine invitation (within 5 yrs)	Routine invitation (more than 5 yrs)	Early Recall Invitations	First & routine invitation (within 5 yrs)	First & all routine invitations ⁽¹⁾
England	69	17	87	45	99	84	74
North East	74	18	89	44	100	86	76
Gateshead	74	15	88	43	100	85	75
Newcastle	74	20	90	45	100	87	79
North Tees	73	19	88	44	100	85	75
North West	71	16	88	41	100	84	73
Bolton, Bury & Rochdale	70	14	87	37	100	84	72
Chester	76	14	89	36	-	87	77
Crewe	76	15	90	31	100	88	78
East Cheshire & Stockport	72	18	89	44	100	86	77
East Lancashire	68	17	85	43	100	82	71
Greater Manchester	66	17	86	38	100	82	69
Liverpool	70	16	88	39	100	85	72
North Cumbria	78	19	90	48	100	88	79
North Lancashire	70	16	88	49	100	84	74
Warrington	71	16	87	40	100	84	73
Wigan	72	17	87	43	100	85	74
Wirral	75	12	89	36	100	87	75
Yorkshire & the Humber	72	17	88	40	99	85	75
Barnsley	77	17	91	41	-	88	80
Doncaster	76	17	88	42	100	86	77
Humberside	70	16	87	42	100	84	74
Leeds Wakefield	70	17	88	39	100	85	74
North Yorkshire	75	19	91	43	100	88	80
Pennine	69	16	87	39	97	83	71
Rotherham	79	17	90	40	-	88	79
Sheffield	73	17	90	43	100	87	78
East Midlands	75	19	89	47	100	87	78
Derby City & South Derbyshire	79	19	90	54	100	88	81
Kettering	76	19	86	40	100	85	76
Leicestershire	79	19	92	54	100	90	81
Lincolnshire	72	19	87	48	100	85	77
North Derbyshire & Chesterfield	75	20	89	46	100	86	78
North Nottinghamshire	77	21	90	37	100	88	79
Northampton	73	20	89	40	100	86	77
Nottingham City	71	18	89	43	100	86	76
West Midlands	71	16	87	46	100	85	74
City, Sandwell & Walsall	63	17	81	52	100	77	66
Dudley & Wolverhampton	71	13	89	44	100	86	73
Hereford & Worcester	75	16	90	45	100	88	79
North Staffordshire	74	14	88	44	100	86	75
Shropshire	76	17	91	44	-	89	79
South Birmingham	70	16	88	39	100	85	72
South Staffordshire	76	18	90	47	100	87	79
Warwickshire, Solihull & Coventry	69	17	86	44	100	83	73
East of England	72	18	89	49	100	86	76
Beds & Herts	71	19	88	43	100	85	75
Cambridge & Huntingdon	72	19	89	50	100	85	76
Colchester & Chelmsford	74	17	89	43	100	87	79
East Suffolk	76	20	91	42	100	88	80
Epping	68	20	86	55	100	82	73
James Paget	73	13	91	59	100	88	79
Kings Lynn	73	15	91	47	100	88	79
Norfolk & Norwich	76	17	92	60	100	89	81
Peterborough	73	17	91	55	100	87	79
South Essex (Southend)	62	19	86	39	100	82	69
West Suffolk	73	17	90	59	100	86	78

Table 13a: NHS Breast Screening Programme: uptake by women aged 50-70 by type of invitation and Breast Screening Unit, 2008-09

percentages

Breast Screening Unit	Invitation type					Invitation type grouping	
	First invitation for screening	Routine invitation (previous non-attender)	Routine invitation (within 5 yrs)	Routine invitation (more than 5 yrs)	Early Recall Invitations	First & routine invitation (within 5 yrs)	First & all routine invitations ⁽¹⁾
England	69	17	87	45	99	84	74
London	56	16	80	39	100	73	61
Barking, Havering, Redbridge & Brentwood	58	19	88	42	100	77	67
Central & East London	52	18	76	40	100	69	56
North London	57	17	78	43	100	72	60
South East London (Kings College Hospital)	56	13	81	30	100	74	61
South East London (Queen Mary's Sidcup)	62	15	83	31	100	78	65
South West London	60	17	82	39	100	77	65
West of London	51	16	78	40	100	71	57
South East Coast	68	19	88	52	100	84	75
Canterbury	71	22	88	48	100	85	76
East Sussex/Brighton	62	16	83	31	100	79	68
Guildford	66	18	87	57	100	83	73
Maidstone	73	20	90	50	100	87	79
Medway	73	21	89	52	100	87	78
Worthing	69	18	89	56	100	85	76
South Central	71	19	88	43	99	85	76
Aylesbury	76	18	90	39	100	88	79
East Berkshire	70	18	87	40	100	84	75
Isle of Wight	74	17	89	56	100	87	78
Milton Keynes	74	18	87	39	100	85	77
North & Mid Hampshire	75	18	88	47	100	86	78
Oxford	71	19	88	44	100	85	77
Portsmouth	69	20	88	43	100	84	74
Southampton & Salisbury	66	21	88	43	94	84	75
West Berkshire	69	18	87	40	100	83	74
Wycombe	75	20	88	33	100	86	79
South West	73	19	88	48	98	86	76
Avon	71	20	87	38	100	85	74
Cornwall	73	20	89	47	100	86	76
Dorset	72	16	87	47	95	85	75
Gloucestershire	76	18	90	42	98	87	77
North & Eastern Devon	69	21	88	59	100	85	76
Somerset	74	20	90	53	100	87	79
South Devon (Torbay)	72	19	87	43	100	85	75
West Devon & East Cornwall	76	20	89	49	50	88	79
Wiltshire	74	18	90	56	97	87	78

Source : KC62 (Part 1, Tables A to D)

⁽¹⁾ This is the grouping used in Table 3 (First & all routine invitations)

"-" Denotes no invitations sent in the period

Copyright © 2010, The Health and Social Care Information Centre. All rights reserved

Table 14: NHS Breast Screening Programme: Selected diagnostic and outcome statistics for women aged 50-64, by Breast Screening Unit, 2008-09

Breast Screening Unit	All women (T)			
	Screened	Benign Biopsy rate per 1,000 ⁽¹⁾	Non-operative Diagnosis rate % ⁽²⁾	Assessment rate % ⁽³⁾
England	1,315,859	0.9	94.8	4.4
North East	72,393	0.7	97.3	3.5
Gateshead	22,800	0.4	98.2	4.2
Newcastle	23,735	0.8	95.9	3.1
North Tees	25,858	0.8	98.1	3.2
North West	177,585	0.9	95.6	4.6
Bolton, Bury & Rochdale	17,112	1.0	97.5	4.3
Chester	5,478	0.2	100.0	3.4
Crewe	8,315	0.7	97.9	4.6
East Cheshire & Stockport	12,485	0.6	96.9	5.4
East Lancashire	13,382	1.0	95.7	3.3
Greater Manchester	27,753	0.7	96.4	3.8
Liverpool	19,682	1.7	94.9	4.9
North Cumbria	9,561	0.9	94.7	5.0
North Lancashire	23,173	1.1	93.2	4.3
Warrington	13,103	0.6	96.6	5.0
Wigan	17,994	0.9	93.3	5.8
Wirral	9,547	0.2	94.6	6.1
Yorkshire & the Humber	146,017	0.8	96.5	3.8
Barnsley	6,488	1.4	100.0	4.4
Doncaster	12,356	0.6	100.0	2.5
Humberside	29,951	0.4	95.9	3.0
Leeds Wakefield	25,785	1.4	94.4	4.5
North Yorkshire	21,116	0.3	98.2	4.3
Pennine	32,165	0.8	95.5	3.9
Rotherham	6,758	1.3	98.1	4.2
Sheffield	11,398	1.0	96.4	3.9
East Midlands	122,957	0.6	95.6	3.9
Derby City & South Derbyshire	18,162	0.2	95.4	3.2
Kettering	9,450	0.6	98.6	4.9
Leicestershire	26,850	0.7	95.3	3.6
Lincolnshire	25,030	0.5	95.2	4.8
North Derbyshire & Chesterfield	10,609	0.2	96.0	3.7
North Nottinghamshire	6,773	1.0	92.5	3.4
Northampton	9,554	0.8	98.2	3.9
Nottingham City	16,529	0.7	95.0	3.3
West Midlands	133,736	0.8	95.0	4.3
City, Sandwell & Walsall	21,507	0.8	95.9	5.6
Dudley & Wolverhampton	14,116	0.9	93.4	4.7
Hereford & Worcester	16,984	0.9	90.1	4.0
North Staffordshire	12,453	0.8	95.1	4.2
Shropshire	13,866	1.0	94.4	4.6
South Birmingham	9,678	0.8	93.2	4.3
South Staffordshire	18,425	0.4	99.2	2.8
Warwickshire, Solihull & Coventry	26,707	0.7	96.5	4.2
East of England	149,892	0.9	92.2	4.5
Beds & Herts	34,938	0.7	92.5	4.9
Cambridge & Huntingdon	9,972	1.5	92.6	4.6
Colchester & Chelmsford	19,746	0.3	92.4	3.4
East Suffolk	10,126	0.4	95.5	3.2
Epping	8,288	1.0	94.4	4.4
James Paget	6,771	1.0	87.2	4.3
Kings Lynn	6,730	1.6	94.3	5.5
Norfolk & Norwich	17,580	1.5	90.8	4.1
Peterborough	10,036	0.9	97.6	6.3
South Essex (Southend)	15,968	0.6	89.6	3.7
West Suffolk	9,737	1.5	86.8	6.8

Table 14: NHS Breast Screening Programme: Selected diagnostic and outcome statistics for women aged 50-64, by Breast Screening Unit, 2008-09

Breast Screening Unit	All women (T)			
	Screened	Benign Biopsy rate per 1,000 ⁽¹⁾	Non-operative Diagnosis rate % ⁽²⁾	Assessment rate % ⁽³⁾
England	1,315,859	0.9	94.8	4.4
London	143,673	1.0	94.1	5.0
Barking, Havering, Redbridge & Brentwood	14,061	0.7	92.1	5.3
Central & East London	21,719	0.6	95.9	4.5
North London	31,038	1.1	94.7	5.3
South East London (Kings College Hospital)	21,494	0.6	94.4	3.6
South East London (Queen Mary's Sidcup)	9,546	1.6	96.3	5.8
South West London	25,415	1.5	92.9	5.5
West of London	20,400	1.1	93.0	5.3
South East Coast	114,853	1.2	94.7	4.6
Canterbury	17,518	1.7	97.4	3.4
East Sussex/Brighton	14,315	1.6	90.5	3.5
Guildford	32,421	1.6	93.5	5.1
Maidstone	11,997	0.8	98.9	5.0
Medway	15,446	0.9	95.5	6.5
Worthing	23,156	0.5	94.9	3.8
South Central	111,537	0.8	94.1	5.0
Aylesbury	4,720	1.3	88.9	4.5
East Berkshire	11,060	0.9	88.1	5.0
Isle of Wight	5,581	0.7	94.1	7.7
Milton Keynes	6,587	-	91.4	4.1
North & Mid Hampshire	14,057	1.2	91.4	5.8
Oxford	13,729	0.8	97.2	5.5
Portsmouth	15,150	0.9	99.0	3.6
Southampton & Salisbury	20,330	0.9	91.9	5.7
West Berkshire	11,787	0.3	100.0	3.8
Wycombe	8,536	0.7	93.9	3.8
South West	143,216	1.0	94.1	4.9
Avon	25,463	1.2	96.0	4.6
Cornwall	12,362	1.5	85.4	6.2
Dorset	22,054	0.8	97.7	4.8
Gloucestershire	15,201	1.0	90.7	4.6
North & Eastern Devon	15,868	0.9	95.4	4.9
Somerset	14,460	0.8	98.1	5.7
South Devon (Torbay)	10,183	0.7	95.8	4.0
West Devon & East Cornwall	14,159	1.6	94.2	5.5
Wiltshire	13,466	0.7	90.1	3.6

Source: KC62 (Parts 1 and 2, Table T)

⁽¹⁾ Benign Biopsy rate: number of benign biopsies per 1,000 women screened⁽²⁾ Non-operative Diagnosis rate: percentage of cancers diagnosed cytologically or histologically without surgery (% of all cancers diagnosed)⁽³⁾ Assessment rate: percentage of women referred for assessment

Table 14a: NHS Breast Screening Programme: Selected diagnostic and outcome statistics for women aged 50-70, by Breast Screening Unit, 2008-09

Breast Screening Unit	All women (T)			
	Screened	Benign Biopsy rate per 1,000 ⁽¹⁾	Non-operative Diagnosis rate % ⁽²⁾	Assessment rate % ⁽³⁾
England	1,674,362	0.8	95.1	4.3
North East	91,170	0.6	97.3	3.4
Gateshead	28,100	0.4	98.1	4.0
Newcastle	30,304	0.7	96.4	3.0
North Tees	32,766	0.7	97.4	3.2
North West	226,188	0.8	95.5	4.4
Bolton, Bury & Rochdale	21,677	0.9	97.7	4.2
Chester	7,036	0.1	100.0	3.2
Crewe	10,571	0.7	97.3	4.4
East Cheshire & Stockport	16,301	0.6	97.8	5.2
East Lancashire	16,781	0.8	96.9	3.2
Greater Manchester	34,752	0.6	96.6	3.6
Liverpool	25,194	1.8	94.3	4.7
North Cumbria	12,323	0.8	93.3	4.9
North Lancashire	30,177	1.1	93.6	4.1
Warrington	16,416	0.5	95.9	4.7
Wigan	23,023	0.8	91.6	5.5
Wirral	11,937	0.2	94.8	5.9
Yorkshire & the Humber	185,972	0.7	96.7	3.7
Barnsley	8,298	1.2	100.0	4.0
Doncaster	15,812	0.4	100.0	2.3
Humberside	37,989	0.3	96.3	3.2
Leeds Wakefield	32,685	1.3	95.8	4.3
North Yorkshire	27,425	0.3	98.4	4.3
Pennine	40,418	0.7	95.0	3.8
Rotherham	8,612	1.2	98.5	3.9
Sheffield	14,733	1.1	96.3	3.6
East Midlands	157,546	0.5	95.6	3.8
Derby City & South Derbyshire	23,098	0.1	96.5	3.1
Kettering	11,743	0.9	98.9	4.8
Leicestershire	34,080	0.6	95.1	3.6
Lincolnshire	33,642	0.5	94.4	4.6
North Derbyshire & Chesterfield	13,621	0.1	97.2	3.5
North Nottinghamshire	8,478	0.9	93.2	3.3
Northampton	11,720	0.7	97.6	3.9
Nottingham City	21,164	0.7	94.5	3.3
West Midlands	171,396	0.7	95.3	4.2
City, Sandwell & Walsall	27,781	0.9	96.5	5.6
Dudley & Wolverhampton	18,340	0.7	94.2	4.4
Hereford & Worcester	21,441	0.8	92.3	4.0
North Staffordshire	15,954	0.7	96.2	4.0
Shropshire	17,866	1.0	93.8	4.3
South Birmingham	12,283	0.7	92.9	3.9
South Staffordshire	23,595	0.5	98.4	2.8
Warwickshire, Solihull & Coventry	34,136	0.7	95.7	4.1
East of England	192,793	0.9	93.3	4.3
Beds & Herts	44,040	0.7	92.6	4.7
Cambridge & Huntingdon	15,149	1.1	96.1	4.3
Colchester & Chelmsford	25,369	0.4	93.0	3.3
East Suffolk	13,527	0.4	97.2	3.0
Epping	10,598	0.8	96.0	4.2
James Paget	9,238	0.8	90.1	4.1
Kings Lynn	8,886	1.4	93.9	5.3
Norfolk & Norwich	22,528	1.3	92.4	4.0
Peterborough	11,978	1.2	97.9	6.2
South Essex (Southend)	20,683	0.7	90.7	3.7
West Suffolk	10,797	1.5	86.8	6.5

Table 14a: NHS Breast Screening Programme: Selected diagnostic and outcome statistics for women aged 50-70, by Breast Screening Unit, 2008-09

Breast Screening Unit	All women (T)			
	Screened	Benign Biopsy rate per 1,000 ⁽¹⁾	Non-operative Diagnosis rate % ⁽²⁾	Assessment rate % ⁽³⁾
England	1,674,362	0.8	95.1	4.3
London	177,559	1.0	94.6	4.8
Barking, Havering, Redbridge & Brentwood	16,962	0.8	91.2	5.2
Central & East London	26,470	0.6	96.8	4.3
North London	38,826	1.0	94.7	5.1
South East London (Kings College Hospital)	26,654	0.6	95.7	3.5
South East London (Queen Mary's Sidcup)	12,064	1.4	96.1	5.4
South West London	31,415	1.4	94.7	5.2
West of London	25,168	1.2	92.7	5.1
South East Coast	146,306	1.1	95.0	4.4
Canterbury	22,471	1.4	97.2	3.5
East Sussex/Brighton	18,234	1.5	90.0	3.2
Guildford	41,051	1.6	94.2	4.9
Maidstone	15,312	0.7	99.2	4.8
Medway	19,478	0.8	95.0	6.3
Worthing	29,760	0.5	95.4	3.8
South Central	141,936	0.7	94.8	4.8
Aylesbury	5,999	1.3	90.2	4.6
East Berkshire	13,817	0.7	92.0	4.7
Isle of Wight	7,381	0.7	93.8	7.2
Milton Keynes	7,988	-	91.5	3.9
North & Mid Hampshire	17,649	1.1	91.9	5.7
Oxford	17,474	0.7	96.6	5.1
Portsmouth	19,612	0.8	98.5	3.4
Southampton & Salisbury	26,346	0.8	94.4	5.6
West Berkshire	14,771	0.5	98.0	3.8
Wycombe	10,899	0.7	95.5	3.6
South West	183,496	1.0	94.2	4.7
Avon	32,287	1.2	95.9	4.5
Cornwall	15,842	1.6	87.3	6.0
Dorset	28,238	0.7	96.3	4.6
Gloucestershire	19,531	0.9	93.6	4.5
North & Eastern Devon	20,594	0.9	91.8	4.7
Somerset	18,718	0.7	97.9	5.3
South Devon (Torbay)	13,140	0.6	97.0	3.8
West Devon & East Cornwall	17,893	1.5	94.6	5.3
Wiltshire	17,253	0.6	90.8	3.4

Source: KC62 (Parts 1 and 2, Table T)

⁽¹⁾ Benign Biopsy rate: number of benign biopsies per 1,000 women screened⁽²⁾ Non-operative Diagnosis rate: percentage of cancers diagnosed cytologically or histologically without surgery (% of all cancers diagnosed)⁽³⁾ Assessment rate: percentage of women referred for assessment

Table 15: NHS Breast Screening Programme: Selected diagnostic and outcome statistics for women aged 50-64, by Breast Screening Unit, 2008-09

Breast Screening Unit	Prevalent round (A+B)					Incident round (C1)				
	Benign Biopsy rate ⁽¹⁾⁽⁶⁾ per 1,000	Non-operative Diagnosis rate % ⁽²⁾	Small cancers detected ⁽³⁾⁽⁶⁾ (<15mm) per 1,000	Standardised detection ratio (SDR) ⁽⁴⁾	Assessment rate % ⁽⁵⁾⁽⁶⁾	Benign Biopsy rate ⁽¹⁾⁽⁶⁾ per 1,000	Non-operative Diagnosis rate % ⁽²⁾	Small cancers detected ⁽³⁾⁽⁶⁾ (<15mm) per 1,000	Standardised detection ratio (SDR) ⁽⁴⁾	Assessment rate % ⁽⁵⁾⁽⁶⁾
	numbers/percentages									
England	2.1	92.1	2.7	1.43	8.5	0.5	95.6	2.8	1.34	3.1
North East	1.8	94.5	2.2	1.24	6.7	0.3	97.8	2.5	1.38	2.5
Gateshead	1.0	100.0	2.3	1.20	8.1	0.3	97.7	3.0	1.52	3.0
Newcastle	1.7	88.6	2.4	1.38	6.4	0.4	97.5	2.2	1.33	2.1
North Tees	2.6	97.0	2.1	1.15	5.6	0.3	98.2	2.5	1.31	2.3
North West	2.2	92.6	2.4	1.41	8.8	0.5	96.4	2.4	1.32	3.2
Bolton, Bury & Rochdale	2.5	100.0	2.8	1.77	9.2	0.7	96.5	2.5	1.25	3.0
Chester	1.0	100.0	1.9	1.51	5.8	0.0	100.0	2.7	1.34	2.7
Crewe	1.3	88.9	1.3	1.19	9.1	0.6	100.0	1.4	1.01	3.4
East Cheshire & Stockport	1.4	100.0	1.4	0.96	9.7	0.4	95.9	3.2	1.47	4.3
East Lancashire	2.1	90.0	3.9	2.27	5.5	0.7	97.5	2.7	1.63	2.6
Greater Manchester	1.7	93.8	2.9	1.53	6.5	0.3	96.9	2.8	1.32	2.6
Liverpool	4.3	93.8	1.7	1.29	10.3	0.7	95.6	1.5	1.28	3.1
North Cumbria	3.3	100.0	1.6	1.11	9.1	0.4	95.5	3.5	1.31	3.9
North Lancashire	2.3	87.5	0.8	0.91	8.0	0.7	94.7	1.8	1.04	3.3
Warrington	1.5	89.3	3.0	2.00	9.9	0.2	100.0	1.4	1.16	3.1
Wigan	1.8	95.2	3.8	1.20	12.1	0.8	91.8	2.7	1.40	3.8
Wirral	0.6	72.7	2.2	1.00	13.2	0.1	98.3	4.4	1.93	3.9
Yorkshire & the Humber	1.8	94.9	3.5	1.62	6.9	0.5	96.8	3.0	1.33	2.8
Barnsley	4.9	100.0	4.1	1.06	10.0	0.6	100.0	3.0	1.11	2.9
Doncaster	1.4	100.0	3.2	1.91	4.6	0.4	100.0	2.3	1.19	2.0
Humberside	0.5	96.6	3.4	1.42	4.3	0.3	95.1	3.1	1.27	2.5
Leeds Wakefield	2.9	89.1	3.0	1.83	8.9	1.1	95.6	2.9	1.37	3.0
North Yorkshire	0.8	100.0	3.8	1.82	7.8	0.2	97.5	2.2	1.30	3.2
Pennine	2.1	90.3	4.3	1.62	6.5	0.5	97.5	3.1	1.39	3.0
Rotherham	2.9	100.0	3.6	1.32	8.1	0.8	97.5	6.0	1.81	3.1
Sheffield	2.7	100.0	2.3	1.52	9.1	0.6	95.1	3.4	1.28	2.4
East Midlands	1.7	94.5	3.2	1.47	7.3	0.3	95.9	3.3	1.42	2.9
Derby City & South Derbyshire	0.0	89.7	3.1	1.47	5.6	0.2	96.3	3.6	1.64	2.4
Kettering	1.6	100.0	3.3	1.12	10.0	0.4	98.0	2.8	1.48	3.6
Leicestershire	2.3	92.7	2.9	1.61	6.2	0.2	96.5	3.2	1.36	2.8
Lincolnshire	1.6	94.1	3.2	1.43	9.4	0.3	95.7	3.4	1.47	3.6
North Derbyshire & Chesterfield	0.9	100.0	1.4	0.82	6.7	0.0	94.8	3.3	1.37	2.7
North Nottinghamshire	3.4	92.9	5.0	2.40	7.2	0.6	94.3	3.1	1.17	2.5
Northampton	1.5	100.0	3.6	1.44	7.2	0.7	97.3	2.8	1.15	2.8
Nottingham City	3.2	95.8	3.8	1.60	6.9	0.1	94.4	3.8	1.47	2.4
West Midlands	1.7	90.9	2.8	1.60	8.5	0.5	96.4	2.8	1.40	3.1
City, Sandwell & Walsall	1.6	95.2	3.3	1.76	9.8	0.5	96.6	2.2	1.33	4.0
Dudley & Wolverhampton	2.5	80.0	2.5	1.38	9.7	0.6	96.0	3.6	1.55	3.4
Hereford & Worcester	1.9	90.5	1.9	1.23	5.9	0.7	90.0	2.8	1.26	3.1
North Staffordshire	1.4	88.0	4.1	2.34	8.7	0.7	97.3	3.1	1.53	3.0
Shropshire	2.8	88.9	1.6	1.35	11.4	0.7	97.0	2.1	1.28	3.0
South Birmingham	2.4	88.2	2.9	1.61	8.1	0.4	96.1	3.8	1.54	2.9
South Staffordshire	1.3	96.0	2.5	1.65	6.8	0.2	100.0	3.0	1.37	1.9
Warwickshire, Solihull & Coventry	0.8	92.7	3.2	1.55	7.7	0.5	97.9	2.6	1.44	3.1
East of England	2.3	86.0	2.7	1.44	9.2	0.5	94.6	3.0	1.39	3.1
Beds & Herts	1.8	88.4	3.7	1.79	10.3	0.4	93.9	2.9	1.35	3.2
Cambridge & Huntingdon	3.2	90.5	2.1	1.46	7.6	1.0	93.0	3.2	1.50	3.3
Colchester & Chelmsford	0.3	84.0	2.3	1.35	7.8	0.3	94.7	1.8	1.26	2.3
East Suffolk	1.1	96.0	2.2	1.32	5.7	0.1	97.1	2.6	0.97	2.1
Epping	1.0	100.0	2.6	1.02	6.6	0.9	95.7	4.0	1.80	3.3
James Paget	3.4	66.7	0.8	0.87	11.4	0.6	96.4	3.0	1.20	2.6
Kings Lynn	4.7	92.9	1.6	1.60	10.4	0.8	94.2	4.3	2.04	4.3
Norfolk & Norwich	4.7	77.1	3.8	1.72	8.0	0.9	96.1	3.4	1.67	3.1
Peterborough	1.5	88.2	1.5	1.27	12.3	0.4	100.0	4.0	1.56	4.5
South Essex (Southend)	1.0	78.9	2.9	1.17	7.3	0.5	91.5	2.8	1.14	2.5
West Suffolk	5.4	84.2	1.6	1.25	16.6	0.6	88.6	3.1	1.21	4.1
London	2.0	92.9	2.3	1.19	8.8	0.6	94.5	2.7	1.33	3.2
Barking, Havering, Redbridge & Brentwood	1.3	94.1	1.8	0.76	6.7	0.4	92.0	2.8	1.20	4.0
Central & East London	1.2	93.2	1.9	1.19	7.9	0.2	98.6	2.6	1.29	2.5
North London	2.5	91.8	1.9	1.22	9.6	0.4	95.1	2.8	1.60	3.4
South East London (Kings College Hospital)	0.9	95.1	3.0	1.33	6.1	0.4	93.8	2.5	1.21	2.5
South East London (Queen Mary's Sidcup)	3.8	100.0	1.4	0.94	11.6	1.0	94.3	2.7	1.08	3.7
South West London	2.3	91.3	2.8	1.42	9.9	1.2	93.9	2.9	1.44	3.8
West of London	2.8	91.9	3.0	1.25	10.6	0.6	93.2	2.8	1.16	2.9

Table 15: NHS Breast Screening Programme: Selected diagnostic and outcome statistics for women aged 50-64, by Breast Screening Unit, 2008-09

Breast Screening Unit	Prevalent round (A+B)					Incident round (C1)				
	Benign Biopsy rate ⁽¹⁾⁽⁶⁾ per 1,000	Non-operative Diagnosis rate % ⁽²⁾	Small cancers detected ⁽³⁾⁽⁶⁾ (<15mm) per 1,000	Standardised detection ratio (SDR) ⁽⁴⁾	Assessment rate % ⁽⁵⁾⁽⁶⁾	Benign Biopsy rate ⁽¹⁾⁽⁶⁾ per 1,000	Non-operative Diagnosis rate % ⁽²⁾	Small cancers detected ⁽³⁾⁽⁶⁾ (<15mm) per 1,000	Standardised detection ratio (SDR) ⁽⁴⁾	Assessment rate % ⁽⁵⁾⁽⁶⁾
	numbers/percentages									
England	2.1	92.1	2.7	1.43	8.5	0.5	95.6	2.8	1.34	3.1
South East Coast	2.8	92.3	3.4	1.56	8.4	0.7	95.0	3.0	1.39	3.3
Canterbury	3.8	100.0	3.8	1.81	6.4	1.2	96.1	2.6	1.17	2.6
East Sussex/Brighton	2.9	84.0	3.6	1.74	6.4	1.0	93.0	2.9	1.57	2.3
Guildford	4.0	88.3	3.7	1.63	10.2	0.9	94.3	2.8	1.33	3.6
Maidstone	2.6	100.0	4.7	1.41	9.1	0.2	98.6	4.4	1.73	3.7
Medway	2.7	94.4	1.4	1.29	10.2	0.5	95.1	2.4	1.37	5.3
Worthing	0.7	93.9	3.1	1.44	7.2	0.4	94.3	3.2	1.34	2.3
South Central	1.9	93.1	2.5	1.45	10.3	0.4	94.0	2.4	1.22	3.4
Aylesbury	2.5	87.5	4.9	1.60	8.5	1.1	88.0	2.5	1.46	3.6
East Berkshire	1.4	82.4	1.4	1.22	11.3	0.6	89.2	2.0	0.82	3.1
Isle of Wight	1.1	85.7	3.2	1.60	13.3	0.5	94.6	4.8	1.75	6.1
Milton Keynes	0.0	100.0	2.7	1.15	7.9	0.0	88.5	1.8	1.12	3.0
North & Mid Hampshire	2.2	88.0	2.9	1.91	11.1	0.6	93.8	2.0	1.08	4.1
Oxford	1.5	96.4	1.9	1.36	13.4	0.6	97.3	2.6	1.51	3.1
Portsmouth	3.5	95.2	2.5	1.25	7.8	0.3	100.0	1.9	1.09	2.3
Southampton & Salisbury	2.3	94.4	2.3	1.54	11.1	0.4	90.1	3.2	1.29	4.2
West Berkshire	0.0	100.0	2.9	1.54	8.4	0.5	100.0	2.4	1.36	2.3
Wycombe	3.3	100.0	2.6	1.20	8.3	0.2	91.4	1.7	1.03	2.6
South West	2.5	92.0	2.6	1.39	9.8	0.6	95.2	2.7	1.23	3.4
Avon	3.7	89.3	2.2	1.26	10.5	0.6	97.0	3.4	1.47	3.1
Cornwall	2.6	85.0	2.6	1.38	12.4	1.3	88.1	3.0	1.28	4.3
Dorset	1.6	100.0	1.8	1.18	9.6	0.6	98.9	3.1	1.18	3.4
Gloucestershire	2.6	78.9	1.6	1.06	7.7	0.4	93.9	1.2	1.00	3.3
North & Eastern Devon	2.5	95.8	1.8	1.33	9.4	0.4	94.2	2.4	1.23	3.3
Somerset	1.4	100.0	6.6	2.03	12.2	0.5	97.0	3.1	1.19	3.6
South Devon (Torbay)	1.9	100.0	1.9	1.19	8.1	0.4	96.2	2.4	1.25	2.7
West Devon & East Cornwall	5.4	92.9	5.0	2.42	11.7	0.8	94.0	2.6	1.06	4.1
Wiltshire	1.5	80.0	1.1	1.02	6.6	0.4	94.7	1.9	1.26	2.4

Source: KC62 Parts 1, 2 and 3, Tables A, B, and C1

⁽¹⁾ Benign Biopsy rate: number of benign biopsies per 1,000 women screened⁽²⁾ Non-operative Diagnosis rate: percentage of cancers diagnosed cytologically or histologically without surgery (% of all cancers diagnosed)⁽³⁾ Small cancer detection rate: number of invasive cancers smaller than 15mm detected (per 1,000 women screened)⁽⁴⁾ SDR (all invasive cancers): ratio of the observed number of invasive cancers to the expected number based on applying criteria from the Swedish Two County randomised control trial, which is used as a yard stick of performance. An SDR of 1 equates to approximate parity with the Swedish trial. An SDR of 1 with an uptake of 70% should achieve a mortality reduction of approximately 25%.⁽⁵⁾ Assessment rate: percentage of women referred for assessment⁽⁶⁾ Data in the prevalent round are calculated based on women aged 50-64 with a 'first invitation for routine screening (A)' and 'routine invitation to previous non-attenders (B)'. For the incident round these rates are calculated using women aged 50-64 with a 'routine invitation to previous attenders (within 5 years)(C1)'. These data will differ slightly to those produced to match NHS Breast Screening Programme standards which for the prevalent round use data only for women aged 50-52 and with a 'first invitation for routine screening (A)', and in the incident round use data for women aged 53-64 and who have attended previously (within 5 years) (C1).

Table 15a: NHS Breast Screening Programme: Selected diagnostic and outcome statistics for women aged 50-70, by Breast Screening Unit, 2008-09

Breast Screening Unit	Prevalent round (A+B)					Incident round (C1)				
	Benign Biopsy rate ⁽¹⁾⁽⁶⁾	Non-operative Diagnosis rate % ⁽²⁾	Small cancers detected ⁽³⁾⁽⁶⁾ (<15mm)	Standardised detection ratio (SDR) ⁽⁴⁾	Assessment rate % ⁽⁵⁾⁽⁶⁾	Benign Biopsy rate ⁽¹⁾⁽⁶⁾	Non-operative Diagnosis rate % ⁽²⁾	Small cancers detected ⁽³⁾⁽⁶⁾ (<15mm)	Standardised detection ratio (SDR) ⁽⁴⁾	Assessment rate % ⁽⁵⁾⁽⁶⁾
	per 1,000		per 1,000			per 1,000		per 1,000		
England	2.1	92.2	2.8	1.42	8.5	0.5	95.7	3.2	1.44	3.2
North East	1.8	94.6	2.3	1.22	6.7	0.3	97.6	3.0	1.51	2.5
Gateshead	1.0	100.0	2.3	1.19	8.2	0.2	97.7	3.1	1.53	2.9
Newcastle	1.7	88.9	2.6	1.39	6.4	0.3	97.9	2.7	1.50	2.2
North Tees	2.6	97.1	2.1	1.12	5.7	0.3	97.2	3.2	1.50	2.5
North West	2.2	92.8	2.4	1.42	8.8	0.5	96.0	2.9	1.42	3.3
Bolton, Bury & Rochdale	2.5	100.0	2.8	1.72	9.2	0.6	96.9	3.0	1.41	3.2
Chester	1.0	100.0	1.9	1.44	6.0	0.0	100.0	3.2	1.31	2.7
Crewe	1.3	90.0	1.3	1.33	9.3	0.5	100.0	2.3	1.21	3.4
East Cheshire & Stockport	1.4	100.0	1.9	1.04	9.7	0.5	97.2	3.8	1.63	4.2
East Lancashire	2.1	90.0	3.9	2.21	5.4	0.5	98.2	3.3	1.69	2.6
Greater Manchester	1.7	94.1	3.1	1.59	6.5	0.3	96.9	3.1	1.43	2.6
Liverpool	4.3	93.9	1.7	1.32	10.3	0.9	94.9	1.8	1.40	3.1
North Cumbria	3.2	100.0	1.6	1.07	8.9	0.4	93.4	3.5	1.29	3.9
North Lancashire	2.5	88.5	0.8	0.98	8.0	0.8	94.4	2.3	1.12	3.2
Warrington	1.5	89.7	2.9	1.93	9.9	0.2	97.6	2.1	1.31	3.1
Wigan	1.7	95.2	3.8	1.17	12.1	0.6	90.3	3.2	1.53	3.8
Wirral	0.5	72.7	2.2	0.98	13.3	0.1	97.5	4.6	1.92	4.0
Yorkshire & the Humber	1.8	94.7	3.6	1.61	6.9	0.5	97.1	3.4	1.43	2.9
Barnsley	4.9	100.0	4.1	1.04	10.0	0.6	100.0	3.2	1.09	2.8
Doncaster	1.4	100.0	3.7	1.99	4.6	0.3	100.0	2.3	1.17	1.9
Humberside	0.5	96.6	3.4	1.38	4.3	0.3	95.8	3.5	1.40	2.8
Leeds Wakefield	2.8	89.6	3.0	1.85	9.0	1.0	96.9	3.4	1.49	3.0
North Yorkshire	0.8	100.0	3.8	1.78	7.7	0.2	98.0	3.3	1.67	3.5
Pennine	2.1	89.2	4.4	1.62	6.6	0.4	96.9	3.5	1.46	3.0
Rotherham	2.9	100.0	3.6	1.28	8.1	0.7	98.0	5.1	1.55	2.9
Sheffield	2.7	100.0	2.2	1.46	9.1	0.8	95.2	3.2	1.31	2.4
East Midlands	1.8	94.1	3.2	1.45	7.3	0.3	95.7	3.6	1.48	3.0
Derby City & South Derbyshire	0.0	89.7	3.1	1.42	5.6	0.2	97.3	3.6	1.59	2.4
Kettering	1.6	100.0	3.3	1.10	10.0	0.7	98.6	3.1	1.59	3.7
Leicestershire	2.3	92.7	2.9	1.55	6.2	0.3	95.6	3.7	1.49	3.0
Lincolnshire	1.6	91.7	3.3	1.48	9.5	0.4	94.2	3.3	1.38	3.7
North Derbyshire & Chesterfield	0.9	100.0	1.3	0.79	6.6	0.0	96.6	3.7	1.55	2.7
North Nottinghamshire	3.3	92.9	5.0	2.38	7.2	0.6	94.4	3.6	1.42	2.6
Northampton	1.5	100.0	3.6	1.53	7.2	0.6	96.7	3.7	1.42	3.0
Nottingham City	3.4	95.8	3.7	1.54	7.0	0.2	93.8	4.0	1.49	2.4
West Midlands	1.7	91.0	2.8	1.57	8.5	0.6	96.3	3.4	1.52	3.1
City, Sandwell & Walsall	1.6	95.3	3.2	1.68	9.8	0.7	96.9	2.8	1.38	4.1
Dudley & Wolverhampton	2.5	80.0	2.5	1.33	9.6	0.4	97.1	3.3	1.45	3.3
Hereford & Worcester	1.9	90.5	1.9	1.20	6.0	0.6	92.7	4.5	1.70	3.2
North Staffordshire	1.4	88.5	4.5	2.39	8.8	0.6	97.9	3.1	1.37	3.0
Shropshire	2.8	88.9	1.6	1.32	11.4	0.8	96.1	2.9	1.44	3.0
South Birmingham	2.4	88.2	2.9	1.56	8.1	0.3	94.4	3.9	1.60	2.7
South Staffordshire	1.3	96.0	2.5	1.63	6.8	0.3	98.5	3.6	1.54	2.1
Warwickshire, Solihull & Coventry	0.8	92.9	3.3	1.54	7.7	0.6	96.7	3.2	1.60	3.2
East of England	2.3	86.1	2.6	1.40	9.1	0.5	95.0	3.5	1.50	3.1
Beds & Herts	1.8	88.4	3.7	1.72	10.2	0.5	93.3	3.2	1.43	3.3
Cambridge & Huntingdon	3.1	90.5	2.1	1.40	7.7	0.7	96.9	4.3	1.75	3.5
Colchester & Chelmsford	0.3	84.0	2.3	1.31	7.8	0.3	95.1	2.1	1.38	2.3
East Suffolk	1.1	96.3	2.1	1.37	5.8	0.2	98.6	3.8	1.41	2.2
Epping	1.0	100.0	2.6	0.99	6.6	0.7	97.2	4.3	1.85	3.4
James Paget	3.4	66.7	0.8	0.85	11.3	0.4	95.9	3.5	1.36	2.9
Kings Lynn	5.4	92.9	1.5	1.52	10.6	0.6	93.5	4.8	2.10	4.3
Norfolk & Norwich	4.6	77.1	3.7	1.67	8.1	0.8	96.4	3.7	1.62	3.1
Peterborough	1.9	88.2	1.5	1.24	12.2	0.7	100.0	3.6	1.42	4.7
South Essex (Southend)	0.9	78.9	2.8	1.12	7.2	0.6	91.7	3.7	1.34	2.6
West Suffolk	5.3	84.2	1.6	1.22	16.5	0.6	89.6	3.1	1.19	4.0
London	2.0	93.3	2.4	1.19	8.7	0.6	94.9	2.9	1.43	3.2
Barking, Havering, Redbridge & Brentwood	1.3	94.1	1.7	0.72	6.6	0.6	91.0	3.6	1.43	4.0
Central & East London	1.1	93.6	1.8	1.20	8.0	0.3	99.0	2.7	1.30	2.5
North London	2.5	92.2	2.0	1.19	9.6	0.5	95.0	3.0	1.65	3.4
South East London (Kings College Hospital)	0.9	95.2	3.0	1.29	6.1	0.5	95.8	2.5	1.35	2.6
South East London (Queen Mary's Sidcup)	4.2	100.0	2.3	1.23	11.6	0.9	94.1	2.4	1.13	3.6
South West London	2.2	92.0	3.1	1.45	9.9	1.1	95.6	3.0	1.49	3.7
West of London	3.1	92.1	2.9	1.18	10.5	0.6	91.9	3.3	1.38	3.1

Table 15a: NHS Breast Screening Programme: Selected diagnostic and outcome statistics for women aged 50-70, by Breast Screening Unit, 2008-09

Breast Screening Unit	Prevalent round (A+B)					Incident round (C1)				
	Benign Biopsy rate ⁽¹⁾⁽⁶⁾	Non-operative Diagnosis rate	Small cancers detected ⁽³⁾⁽⁶⁾	Standardised detection ratio	Assessment rate	Benign Biopsy rate ⁽¹⁾⁽⁶⁾	Non-operative Diagnosis rate	Small cancers detected ⁽³⁾⁽⁶⁾	Standardised detection ratio	Assessment rate
	per 1,000	% ⁽²⁾	(<15mm) per 1,000	(SDR) ⁽⁴⁾	% ⁽⁵⁾⁽⁶⁾	per 1,000	% ⁽²⁾	(<15mm) per 1,000	(SDR) ⁽⁴⁾	% ⁽⁵⁾⁽⁶⁾
England	2.1	92.2	2.8	1.42	8.5	0.5	95.7	3.2	1.44	3.2
South East Coast	2.8	92.2	3.4	1.59	8.4	0.7	95.3	3.4	1.48	3.3
Canterbury	3.7	100.0	4.0	1.86	6.4	0.9	96.1	3.3	1.37	2.7
East Sussex/Brighton	2.9	84.6	3.6	1.77	6.4	1.0	92.2	2.9	1.53	2.3
Guildford	3.9	86.9	3.8	1.60	10.2	1.0	95.2	3.1	1.39	3.6
Maidstone	2.5	100.0	4.7	1.37	9.0	0.3	99.0	4.5	1.78	3.7
Medway	2.7	94.7	1.3	1.23	10.1	0.5	95.2	3.0	1.63	5.3
Worthing	0.6	94.6	3.2	1.61	7.3	0.4	94.7	3.6	1.41	2.4
South Central	1.9	92.7	2.5	1.43	10.3	0.4	94.9	2.9	1.37	3.5
Aylesbury	2.5	87.5	4.9	1.57	8.6	1.2	88.9	2.7	1.52	3.8
East Berkshire	1.4	83.3	1.4	1.16	11.2	0.5	93.1	2.5	0.99	3.1
Isle of Wight	1.0	75.0	3.1	1.52	13.5	0.5	96.0	4.5	1.72	6.0
Milton Keynes	0.0	100.0	2.7	1.12	7.8	0.0	88.6	2.9	1.22	2.9
North & Mid Hampshire	2.2	88.0	2.9	1.86	11.1	0.6	93.3	2.2	1.18	4.2
Oxford	1.5	96.7	1.9	1.49	13.4	0.4	96.4	2.8	1.66	3.1
Portsmouth	3.5	95.2	2.4	1.22	7.7	0.3	98.9	2.4	1.27	2.4
Southampton & Salisbury	2.5	94.4	2.3	1.48	11.1	0.3	94.0	4.0	1.55	4.4
West Berkshire	0.0	100.0	2.8	1.48	8.5	0.4	98.7	2.7	1.39	2.5
Wycombe	3.3	100.0	2.6	1.16	8.3	0.3	94.2	2.5	1.16	2.7
South West	2.6	92.2	2.6	1.38	9.8	0.6	94.7	3.0	1.33	3.4
Avon	3.7	90.0	2.4	1.34	10.5	0.7	96.4	3.9	1.53	3.1
Cornwall	2.5	85.0	2.5	1.34	12.4	1.4	89.8	3.6	1.50	4.5
Dorset	1.5	100.0	1.8	1.15	9.6	0.5	96.5	3.4	1.31	3.5
Gloucestershire	2.5	80.0	1.6	1.11	7.7	0.4	96.0	1.7	1.21	3.4
North & Eastern Devon	2.4	95.8	1.7	1.27	9.3	0.6	89.8	2.4	1.17	3.4
Somerset	1.7	100.0	6.5	1.99	12.2	0.4	96.8	3.3	1.27	3.5
South Devon (Torbay)	1.9	100.0	1.9	1.13	8.0	0.4	97.5	2.9	1.43	2.8
West Devon & East Cornwall	5.4	92.9	4.9	2.36	11.6	0.8	94.0	3.4	1.21	4.1
Wiltshire	1.4	80.0	1.1	0.98	6.5	0.4	93.7	2.0	1.24	2.4

Source: KC62 (Parts 1, 2 and 3, Tables A, B, and C1)

⁽¹⁾ Benign Biopsy rate: number of benign biopsies per 1,000 women screened⁽²⁾ Non-operative Diagnosis rate: percentage of cancers diagnosed cytologically or histologically without surgery (% of all cancers diagnosed)⁽³⁾ Small cancer detection rate: number of invasive cancers smaller than 15mm detected (per 1,000 women screened)⁽⁴⁾ SDR (all invasive cancers): ratio of the observed number of invasive cancers to the expected number based on applying criteria from the Swedish Two County randomised control trial, which is used as a yard stick of performance. An SDR of 1 equates to approximate parity with the Swedish trial. An SDR of 1 with an uptake of 70% should achieve a mortality reduction of approximately 25%.⁽⁵⁾ Assessment rate: percentage of women referred for assessment⁽⁶⁾ Data in the prevalent round are calculated based on women aged 50-70 with a 'first invitation for routine screening (A)' and 'routine invitation to previous non-attenders (B)'. For the incident round these rates are calculated using women aged 50-70 with a 'routine invitation to previous attenders (within 5 years)(C1)'. These data will differ slightly to those produced to match NHS Breast Screening Programme standards which for the prevalent round use data only for women aged 50-52 and with a 'first invitation for routine screening (A)', and in the incident round use data for women aged 53-70 and who have attended previously (within 5 years) (C1).

*This return is effective from 1 April 2002
It has been approved by the Review of Central Returns Steering Committee (ROCR) and Minister*

Year ending 31 March 2009

Breast Screening Unit code _____
 Breast Screening Unit name _____
 Name of contact _____
 Contact telephone _____
 Email Address _____

If you have any queries regarding completion of this form, please contact The IC on : Telephone : 0113 2547032

Fax :

Email: enquiries@ic.nhs.uk

Returns should be completed and returned to : Health and Social Care Information Centre
 1 Trevelyan Square
 Boar Lane
 Leeds
 LS1 6AE

Please complete the following:

Reading type

Single	Recall if one suggests	Consensus	Arbitration	Mixed
a	b	c	d	e

Number of views

	One view	Two view
Prevalent screen		
Incident screen		

Round length indicator

(percentage of eligible women whose first offered appointment is within 36 months of their previous screen)

Waiting time (percentage within 3 weeks)

(based on date of last screening to date of 1st offered assessment appointment)

For NHS use. Please use this space to record anything relevant to the quality or consistency of the data.

I confirm that these data are, to the best of my knowledge, an accurate representation of the results obtained from the breast screening carried out at this unit.

Breast Screening Director

Name _____

Date _____

Signed _____

KC62 Annex

The purpose of this Annex is to provide further information on each cancer detected which will allow epidemiological comparisons to be made both within the programme and with data from elsewhere.

The file will contain no identifying information of the woman .

The download to accompany the KC62 should be either as a ASCII or EXCEL file.

The information requested is as follows:

Line for each cancer detected	Relevant table (i.e. A, B, C1 etc.)	Age at first offered appointment in this episode (years)	Type of cancer (invasive, non-invasive or micro-invasive)	Size of tumour (mm)	Grade of tumour (I, II or III for invasive and high or low/intermediate for DCIS)	Nodal status of tumour			Histological type *
						Number of lymph nodes sampled (number, 0 or "Not known")	Number sampled positive	Number sampled negative	
(01)	(01)	(02)	(03)	(04)	(05)	(06)	(07)	(08)	(09)
(01)									
(02)									
(03)									
(04)									
(05)									
(06)									
(07)									
(08)									
(09)									
(10)									
(11)									
(12)									
(13)									
(14)									
(15)									
(16)									
(17)									
(18)									
(19)									
(20)									

Use more lines if number of cancers detected exceeds 20

* see guidelines for histological sub types and codes

APPENDIX B

This return is effective from 1 April 2002.

It has been approved by the Review of Central Returns Steering Committee (ROCR) and Minister

ADULT SCREENING PROGRAMMES - BREAST SCREENING

KC63

Year ending 31 March 2009

PCT code _____

PCT name _____

Name of PCT Breast Screening contact _____

PCT Contact Telephone No. _____

PCT Contact Fax No _____

PCT Contact e-mail _____

If you have any queries regarding completion of this form, please contact The Information Centre on

Telephone : 0113 2547032

Fax :

Returns should be completed and returned to : Health and Social Care Information Centre

1 Trevelyan Square

Boar Lane

Leeds

LS1 6AE

For NHS use. Please use this space to record anything relevant to the quality or consistency of the data.

BREAST SCREENING PROGRAMME

KC63

Part 1: CROSS SECTION ANALYSIS OF POPULATION COVERAGE WITHIN PERIOD 1/4/2008 - 31/3/2009

(1)	(2)	(3)	(4)	(5)	(6)	(7)	(8)	(9)	(10)	(11)	(12)	(13)	(14)	(15)
Line Number	Age of woman at 31 March 2008	Number of women resident as at 31 March 2008	Number of ineligible women	Never screened		Call / Recall Episodes				Self/GP Referral Episodes		Women screened		Coverage % Women screened in last 3 years
				Number of women selected	Number never selected	Number invited in period	Number screened in period	Number invited in last 3 years	Number screened in last 3 years	Number screened in period	Number screened in last 3 years	Number screened in period	Number screened in last 3 years	
001	< 45													
002	45 - 49													
003	50 - 52													
004	53 - 54													
005	55 - 59													
006	60 - 64													
007	65 - 69													
008	70													
009	71-74													
010	75+													
011	Target Group (50-70)													
999	Total all ages													

Part 2: WOMEN WITH OPEN EPISODES

001	Number with Open episodes - no invite	
002	Number with Open episodes - invited	

**Published by The NHS Information Centre for health and social care
Part of the Government Statistical Service**

ISBN 978-1-84636-374-0

This publication may be requested in large print or other formats.

Responsible Statistician

Jim Waldron

For further information:

www.ic.nhs.uk

0845 300 6016

enquiries@ic.nhs.uk

Copyright © 2010 The Health and Social Care Information Centre, Workforce and Facilities.
All rights reserved.

This work remains the sole and exclusive property of the Health and Social Care Information Centre and may only be reproduced where there is explicit reference to the ownership of the Health and Social Care Information Centre.

This work may be re-used by NHS and government organisations without permission.

This work is subject to the Re-Use of Public Sector Information Regulations and permission for commercial use must be obtained from the copyright holder.